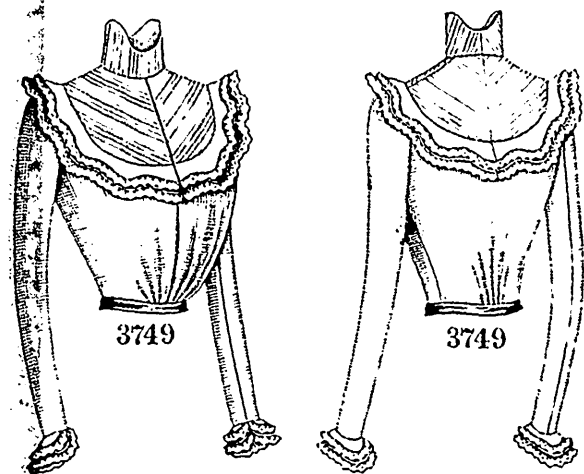


seam sleeve has scant fulness at the top and is completed by a flare cuff. A wrinkled ribbon belt, secured by a jewelled buckle, completes the waist, and a similar ribbon stock may be arranged about the neck if desired.

The shirt-waist may be developed in gingham, piqué, etc.



Front View.

Back View.

LADIES' BASQUE-WAIST, WITH DEEP YOKE THAT MAY BE BIAS OR STRAIGHT AND TUCKED OR PLAIN OR MAY HAVE THE LINING CUT AWAY FROM BENEATH.

(For Description see Page 315.)

The entire toilette may be copied in cloth, cashmere or any of the wash fabrics, such as lawn, challis, dimity or duck.

FIGURE No. 145 R.—LADIES' JAPANESE LOUNGING-ROBE.

(For Illustrations see Page 291.)

FIGURE No. 145 R.—This illustrates a Ladies' wrapper. The pattern, which is No. 3756 and costs 1s. or 25 cents, is in five sizes for ladies from thirty to forty-six inches, bust measure, and is differently pictured on page 302.

This handsome robe is fashioned on the same general lines as the picturesque kimono. Japanese satin heavily embroidered in a floral design in silk floss was here chosen for the robe, which is in V outline at the front. It is in semi-fitted style at the back and sides, but has loose fronts that have gathered fulness along the shoulder edges. The fronts are shaped low to accommodate a rolling collar which reverses the fronts broadly to the lower edge; the collar and reversed portions are faced with plain silk, and the gown is closed at the top with three braid ornaments. The loose two-piece sleeves are gathered at the top and lengthened by a doubled band of silk to harmonize with the facing on the collar and fronts.

Figured or striped silk may be combined with plain satin or plain cashmere, and silk in contrasting shades may be associated for the robe with artistic results.

FIGURES NOS. 146 R, 147 R AND 148 R.—OUTDOOR STYLES FOR SPRING.

(For Illustrations see Page 292.)

FIGURE No. 146 R.—LADIES' COSTUME.—This illustrates a Ladies' costume. The pattern, which is No. 3831 and costs 1s. or 25 cents, is in nine sizes for ladies from thirty to forty-six inches, bust measure, and is also shown on page 301.

Much latitude is allowed in the choice of outdoor garments for early Spring wear, simple and elaborate effects being equally popular. A charming costume in dressy tailor style is here portrayed developed in mixed cheviot associated with cloth and adorned with picot braid. The jacket is an unique model and is snugly fitted by single bust darts and under-arm gores. It is in Eton style, and the fronts, which are dart-fitted, are extended in rounding tabs that fall below the waistline. The fronts are reversed in lapels, and a flaring collar is a becoming feature of the mode. The fronts flare broadly to

reveal a smooth vest that is slightly open at the neck and closed at the center with buttons and cord loops, and the shapely sleeves are in two-seam style.

The separate skirt is a four-gored mode and is in sheath effect over the hips. It is characterized by a single box-plait on the outside at the back and is in dip length.

A handsome costume will result if satin-faced cloth be chosen for the mode, with panne or faille for the vest and facings on the collar and lapels.

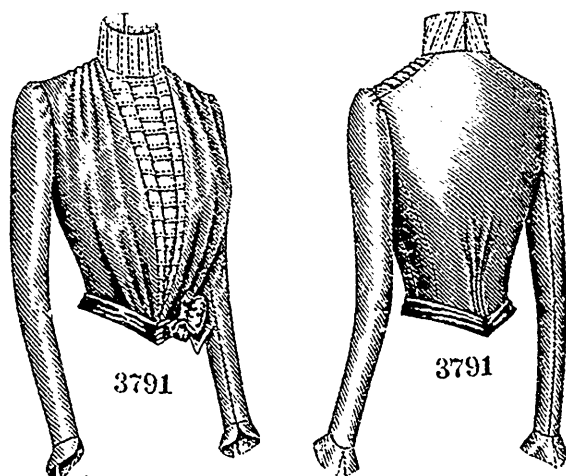
FIGURE No. 147 R.—LADIES' WAIST.—This pictures a Ladies' waist. The pattern, which is No. 3819 and costs 10d. or 20 cents, is in seven sizes for ladies from thirty to forty-two inches, bust measure, and is also depicted on page 310.

A waist of great originality and distinctive style is here illustrated made of mastic pastel cloth combined with tucked white silk. The seamless back is fanciful at the top, where it overlaps a smooth yoke. The outside front blouses slightly at the bottom and is cut out below the bust and shaped low at the top at each side to disclose the full fronts, over which it is arranged. The outside-front extends in strap effect to the back at the neck and is lapped at the bust under ribbon bows having cabochon centers. The back and outside fronts are outlined by trimming bands of silk overlaid with braid appliqué, similar bands adding much to the attractiveness of the sleeves, which are cut out on the upper side, at the top, to disclose deep cap-facings to harmonize with the front. Ribbon bows conceal the crossing of the trimming bands on the sleeves, which are pointed at the wrist, where odd cuffs are applied. A high stock and a chiffon-and-lace tie knotted at the front are at the neck, and a bias belt encircles the waist.

All-over lace and panne or Liberty satin and shirred chiffon will develop a stylish waist by the mode.

FIGURE No. 148 R.—LADIES' TOILETTE.—This includes a Ladies' jacket and skirt. The jacket pattern, which is No. 3807 and costs 10d. or 20 cents, is in seven sizes for ladies from thirty to forty-two inches, bust measure, and is differently depicted on page 307. The skirt pattern, which is No. 3586 and costs 1s. or 25 cents, is in seven sizes from twenty to thirty-two inches, waist measure.

Dark and light gray cloth were here combined for the natty toilette, which consists of an Eton jacket and tunic skirt that are effectively finished with stitching done in dark and light



Front View.

Back View.

LADIES' BASQUE-WAIST, WITH TWO UNDER-ARM GORES. (DESIRABLE FOR STOCK LADIES.)

(For Description see Page 315.)

gray silk. The skirt has a five-gored over-skirt that terminates in graceful scollops. The tunic falls over a five-gored skirt on which is applied a circular flounce, both the skirt and tunic having an under box-plait at the back.

The jacket is a tight-fitting Eton which extends a little