

THE EVENING TIMES AND STAR, ST. JOHN N. B. MONDAY, JUNE 14, 1915

THE WAR SITUATION IN GALICIA



The heavy black line shows the present battle line, illustrating the gains made during the past week, as shown by the contiguous shaded line. The lower shaded line across the Carpathians shows the Russian battle front before the German drive started.

SUMMER-TIME GROCERIES

AT PHILPS' DOUGLAS AVE. AND MAIN

PHONE 886

Salter's Salad Dressing, the 25c. bottle for 20c.
Macdonald's Sweet Pickles, the 30c. bottle for 25c.
PURE ORANGE MARMALADE for Breakfast, Buy 4 for 15c.
The Purest Maple Syrup Obtainable, 40c. per bottle.
Choice Bermuda Onions, 6 lbs. for 25c.
Fine English Breakfast Tea, Fine Formosa Orange Tea—Our 50c. quality of both these Teas—42c.
Choice Florida Grapefruit, 3 for 25c.
Fine Large Havana Pineapples, 15c. and 20c. each.
COOLING DRINKS
Choice Fruit Syrups, all flavors, large bottles, 25c. each.
Ginger Ale, 7c. bottle, 30c. dozen.
Allowance on Bottles Refunded.
Prompt Delivery to All Parts of City

LIFE PRESERVER UGLY; ELBERTUS REFUSED IT

Before Sailing Jocosely Declined Use of Artist Friend's Invention — "Men and Nations Go Down to Death, But the Sun Shines."

The life of Elbert Hubbard, who was lost on the Lusitania, might have been saved if he had not jokingly declined the offer of a life preserver before he sailed. The head of the Roycrofters visited the studio of George Carlock, an American artist, a few days before he sailed. Carlock, who has crossed the ocean frequently, had invented a patent life preserver.

The artist laughingly warned his friend that he feared the Kaiser would be looking for him on account of what he had written about "intervening the German Emperor at St. Helena."

"I'll tell you what I will do," remarked Carlock, "I will lend you my life preserver, and you can send it back to me later on."

Mr. Hubbard looked at the apparatus, which is bulky and weighs about twenty-five pounds, and replied:

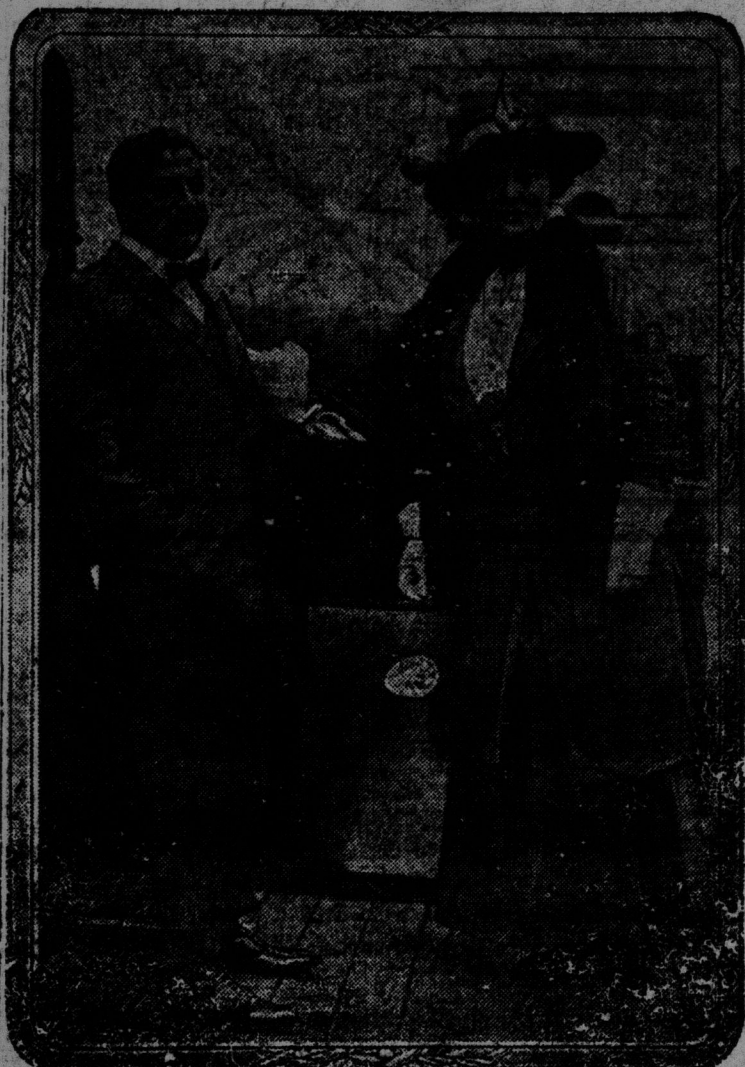
"My dear sir, I was never associated with anything ugly in my life."
That ended the incident. Carlock sailed for Naples on an Italian liner the day before his friend, taking his life preserver, which he had no occasion to use. Hubbard had no life preserver and went down with the Lusitania.

The incident was related by Guido Bruno, editor of "Greenwich Village," who was at the Carlock studio the day Mr. Hubbard was there. Mr. Bruno said he asked Fra Elbertus to write something for his paper on "Our War in Mexico" before the latter sailed for Europe. It was probably the last thing that Hubbard wrote for publication, and here it is:

War is a hectic direction human energy takes under certain conditions. In war time whiskey flows, breweries run night and day, gamblers prosper. Business booms. The towns run wide open. It is not the time to clean up. It is dissipation, disease and death. And disease and death are forms of life. To be sure, it is not productive business, because it has small survival value. Smoke, noise, whoops, arguments, rattle, bang, waste and destruction of life and property spend themselves and leave only the dead and sorrow, sailing vultures. Nevertheless, war changes ownership and consumes the surplus and makes a new deal.

The Supreme Intelligence that "rules the world" takes no thought of an individual, no thought of a nation. Men

FAMOUS BRITISH FINANCIER IN NEW YORK



The picture shows Sir Edward Speyer and his wife, who arrived in New York by the American liner Philadelphia for an extended visit to James Speyer, the noted New York banker. It is believed that Sir Edward's reason for bringing his family to America at this time is due to the great agitation against influential German residents in London since the Lusitania disaster. Sir Edward at that time tendered his resignation from the Privy Council and offered to give up his title, but both were refused by the crown.

and nations go down to death and to dust, but the sun shines and the seasons come and go and the law of gravitation would never forget nor the stars lose their way if both Mexico and the United States should abdicate to Death and leave the continent where it was in 1492.

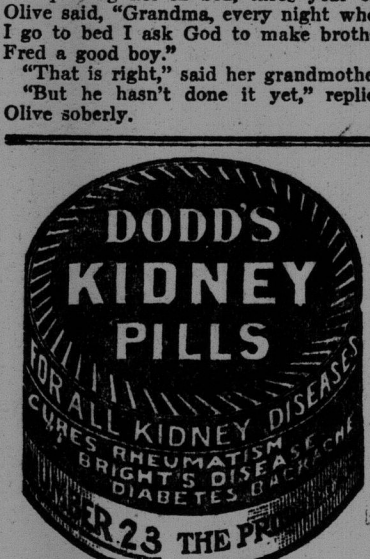
Nature, having infinite time, takes no thought of heart-throbs. And if that perfect race does not appear on the earth for a hundred thousand years, it will suit nature just as well. She can wait.

ELBERT HUBBARD

which tend to make one feel timidly small. In one department are all the materials for the combination of great railway cars, locomotives, rails, and switches. Still another series of shops are given over to the making of motor cars, and everywhere is the sound of enormous presses, the roar of steam hammers, the rattle of overhead cranes, while in and about the great machinery run and climb men who seem in comparison mere pigmies.—From "The Krupps' Model Town," by Robert Hunter, in the American Review of Reviews for June.

One night, when her grandmother was putting her in bed, three year old Olive said, "Grandma, every night when I go to bed I ask God to make brother Fred a good boy."

"That is right," said her grandmother, "but he hasn't done it yet," replied Olive soberly.



USE THE WANT AD. WAY

FINANCIAL MEN IN PUBLIC EYE



R. B. BENNETT, K.C., M.P., President of the Canadian Bankers' Association. He is Vice-President of the Canadian Bankers' Association, and President of the British Empire Timber Co.

FINANCIAL

NEW YORK STOCK MARKET
Quotations furnished by private wire of J. H. Robinson & Sons, St. John, N. B.

Monday, June 14, 1915.

Alumina Copper	77	76%	70	68
Alumina Iron	77	76%	70	68
Alumina Lead	77	76%	70	68
Alumina Nickel	77	76%	70	68
Alumina Silver	77	76%	70	68
Alumina Tin	77	76%	70	68
American Sugar	108%	109	109	109
Am Smelters	88%	88%	84%	89
Am Smelters	88%	88%	84%	89
At. & T. S. Fr.	101%	101%	101%	101%
Brooklyn R. Tran.	88%			
Canada Copper	108%	108%	108%	108%
Canadian Paper	108%	108%	108%	108%
Central Leather	41			
China Copper	108%	108%	108%	108%
China Paper	47%	47%	47%	47%
Chiles and Oils	89%	89%	89	89
Chiles and Oils	89%	89%	89	89
Con Gas	128%	129%	126%	126
Bethlehem Steel	177%	168	168	168
Electric Securities	77%	77%	77	77
Erie, Int. Pfd.	77%	77%	77	77
Erie, Int. Pfd.	77%	77%	77	77
Gen. Northern Pfd.	110%	110%	110%	110%
Interborough Pfd.	22%	22%	22%	22%
Interborough Pfd.	22%	22%	22%	22%
Lehigh Valley	146%	118	118	118
Lehigh Valley	146%	118	118	118
National Lead	77%	77%	77	77
Nor and West	108%	108%	108	108
Nor and West	108%	108%	108	108
Pennsylvania Pfd.	107%	107%	107	107
Pressed S. Car	49%	49%	49	49
Republic Steel	146%	146%	146	146
Rock Island Old	18%	18%	18%	18%
Southern Pacific	68%	68%	68	68
Southern Pacific	68%	68%	68	68
S. S. Sheffield	137%	137%	137	137
Southern Railway	127%	127%	127	127
U. S. Rubber	67%	67%	67	67
United States Steel	100%	100%	100	100
Utah Copper	68%	68%	68	68
Westing. Chem. & A.	88%	88%	88	88
Westing. Chem. & A.	88%	88%	88	88
W. & A. Union	88%	88%	88	88
W. & A. Union	88%	88%	88	88
Sales—Etern of clock	256,000			