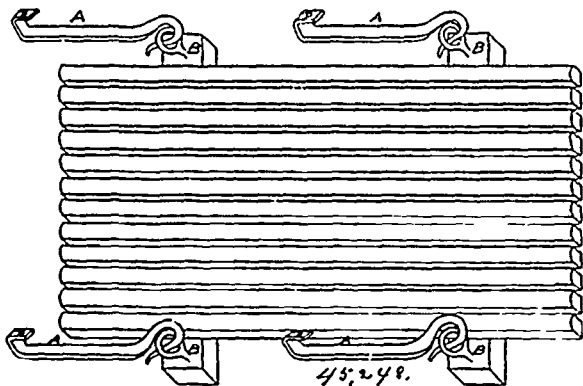


to repeated crushings, until every part thereof is sufficiently reduced, substantially as set forth. 3rd. The herein described apparatus for preparing dough directly from grain, consisting of a pair of preliminary crushing rolls, a casing into which the crushed material passes, said casing having ribs on its inner surface, a screw or worm inside the casing, acting conjointly with the ribs to further reduce the material, and a screen attached to the casing and through which the fine material is forced, substantially as set forth. 4th. The herein described apparatus for preparing dough directly from grain, consisting of a casing adapted to receive material, and having beads or projections terminating in flat ribs, a screw or worm in the casing adapted to act conjointly with the ribs to reduce the material, said material being moved backward by the beads or projections and brought forward again by the screw and a screen attached to the casing and through which the fine material is forced, substantially as set forth. 5th. The herein described apparatus for preparing dough directly from grain, consisting of a casing adapted to receive material, and having ribs on its inner surface, two screws or worms in the casing adapted to act conjointly with the ribs to reduce the material, a screen located between the two screws or worms, and a screen at the end of the casing having finer perforations than the first screen, substantially as set forth. 6th. The herein described apparatus for preparing dough directly from grain, consisting of a casing adapted to receive material and having ribs on its inner surface, a screw or worm inside the casing, acting conjointly with the ribs, a screen attached to the casing, and a rotating cutter located between the screw and the screen, substantially as set forth.

No. 45,248. Apparatus for Making Cheese.

(Appareil pour la fabrication du fromage.)

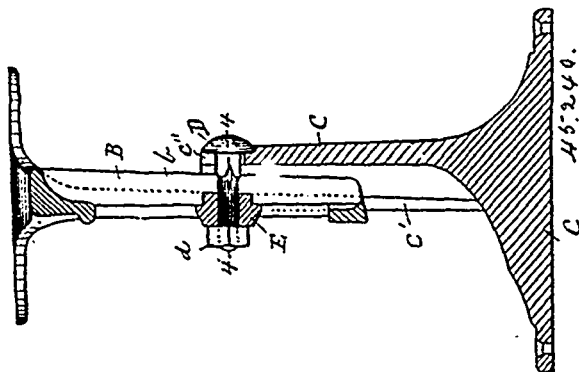


Robert T. Beckett, Kemptville, Ontario, Canada, 5th February, 1894; 6 years.

Claim.—1st. The combination of the curd rack and the hooks and pendants by which the curd rack is attached to the milk vat, substantially as and for the purposes hereinbefore set forth. 2nd. The combination of the curd rack and coarse linen cloth, and the attachments of same to the vat, substantially as and for the purposes hereinbefore set forth.

No. 45,249. Support for School Furniture.

(Support pour meubles d'écoles.)

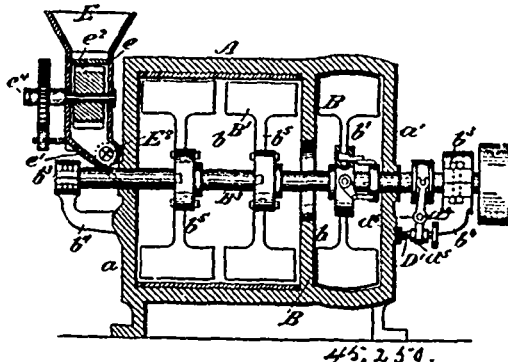


Thomas Russell Roulstone, Somerville, Massachusetts, U.S.A., 5th February, 1894; 6 years.

Claim.—1st. An adjustable support for school furniture consisting of a base portion C, having vertical guides C', and a notch C'' at its upper end, a shank B having a vertical slot b, guide ribs B', and vertical lips or ledges B'', a clamping bolt D, detachably fitting

within the notched upper end of the base portion and extending through the vertical slot in the shank, a washer E bearing against the vertical lips or ledges of the shank, and a nut d engaging the bolt and bearing against the washer, substantially as described. 2nd. An adjustable support for school furniture consisting of a base portion C, having vertically tapering guides C', and a notch C'' at its upper end, a shank B, having a vertical slot b, and tapering guide ribs B' fitting the tapering guides of the base portion, a clamping bolt D engaging the notched upper end of the base portion and extending through the vertical slot in the shank, a washer E bearing against the shank, and a nut d engaging the bolt and bearing against the washer, substantially as described. 3rd. An adjustable support for school furniture consisting of a base portion C, having vertical tapering guides C', a shank B, having a vertical slot and tapering guide ribs B' fitting the tapering guides of the base portion, and a clamping bolt engaging the base portion and extending through the vertical slot in the shank, substantially as described.

No. 45,250. Pulverizing Machine. (Moulin à broyer.)



John James Bordman, Brooklyn, New York, U.S.A., 5th February, 1894; 6 years.

Claim.—1st. The combination, with a cylinder, the beaters and a fan, of a feed chute leading into said cylinder, a damper regulated air inlet formed directly in a portion of said chute, the rotary feeder in the chute, the ratchet-wheel on the shaft of the feeder, the lever having a pawl engagement with the ratchet-wheel, the crank-wheel and the link connecting said crank-wheel and lever. 2nd. The combination, with the cylinder, the driving shaft and the beaters, of the fan blades having their arms seated in sockets in a hub on the driving shaft, levers extended from said arms, a sleeve longitudinally movable on the shaft, links connecting said levers to said sleeve and means for moving the sleeve longitudinally of the shaft. 3rd. The combination, with the cylinder, having the chambers and beaters and a driving shaft, of the fan blades having their arms rotarily seated in sockets formed in a hub fixed to the shaft, levers extended from said arms, a sleeve on the shaft, links connecting said arms and sleeve, another sleeve on the shaft outside the cylinder, a connection between said two sleeves, a yoke lever engaging with the outer sleeve, and the hand screw for rocking the yoke lever to move the sleeves on the shaft to adjust the fan blades. 4th. In a pulverizer, the cylinder, consisting of a lower or fixed portion and an upper or cover portion hinged to the lower portion and a handle on the upper portion. 5th. The combination, with a cylinder, having a beater chamber and a fan chamber, of a feed chute and an air inlet communicating with said chute. 6th. The combination, with a cylinder having chambers, beaters in one of said chambers, a feed chute communicating with the beater chamber and a damper controlled air inlet communicating with said chamber through said chute. 7th. The combination, with the cylinder and the beaters, of a feed chute comprising two sections, one movable relatively to the other and a rotary feeder in a portion of said chute. 8th. The combination, with a rotary shaft, of the beater arms extended therefrom and having oppositely extended fingers at the outer end, the beater blades having the lugs and fastening bolts.

No. 45,251. Pulverizing Machine. (Moulin à broyer.)

John James Bordman, Brooklyn, New York, U.S.A., 5th February 1894; 6 years.

Claim.—1st. The combination with a pulverizing cylinder of a lining therefor consisting of strips of suitable material, and segmental plates adapted to be secured to end walls of the cylinder and hold the lining strips in place, substantially as and for the purpose hereinbefore set forth. 2nd. The combination with a pulverizing cylinder, of the lining strips having the notches, and the segmental securing plates having the lugs adapted to engage in said notches, substantially as and for the purpose hereinbefore set forth. 3rd. In a pulverizing machine, the combination with a beater shaft, of the lateral rollers, the lower bearing rollers, the vertically adjustable frames carrying said rollers and having a stem portion extended into fixed sockets and the adjusting screws in said sockets, substantially as and for the purpose hereinbefore set forth. 4th. In a pulverizing