

C.P.R. Hotels in British Columbia.

The enlargement of the hotel under the shadow of Mount Stephen, at Field, which has recently been completed, has transformed the old building, which comprised a charming dining-room with a few bedrooms attached, into a small but first-class hotel. The addition has a large and handsome hall and billiard-room, with heavy beam and panelled walls and ceiling, and a huge open fireplace for burning logs; there is also a smoking-room and a drawing-room commanding views of the Kicking Horse valley. Fifty additional bedrooms are provided, most of which have bathrooms attached, with up-to-date plumbing, and several have private sitting-rooms en suite. This part of the building is so arranged that, if required, several rooms can be arranged in a suite. The whole of the building will be decorated and furnished in the

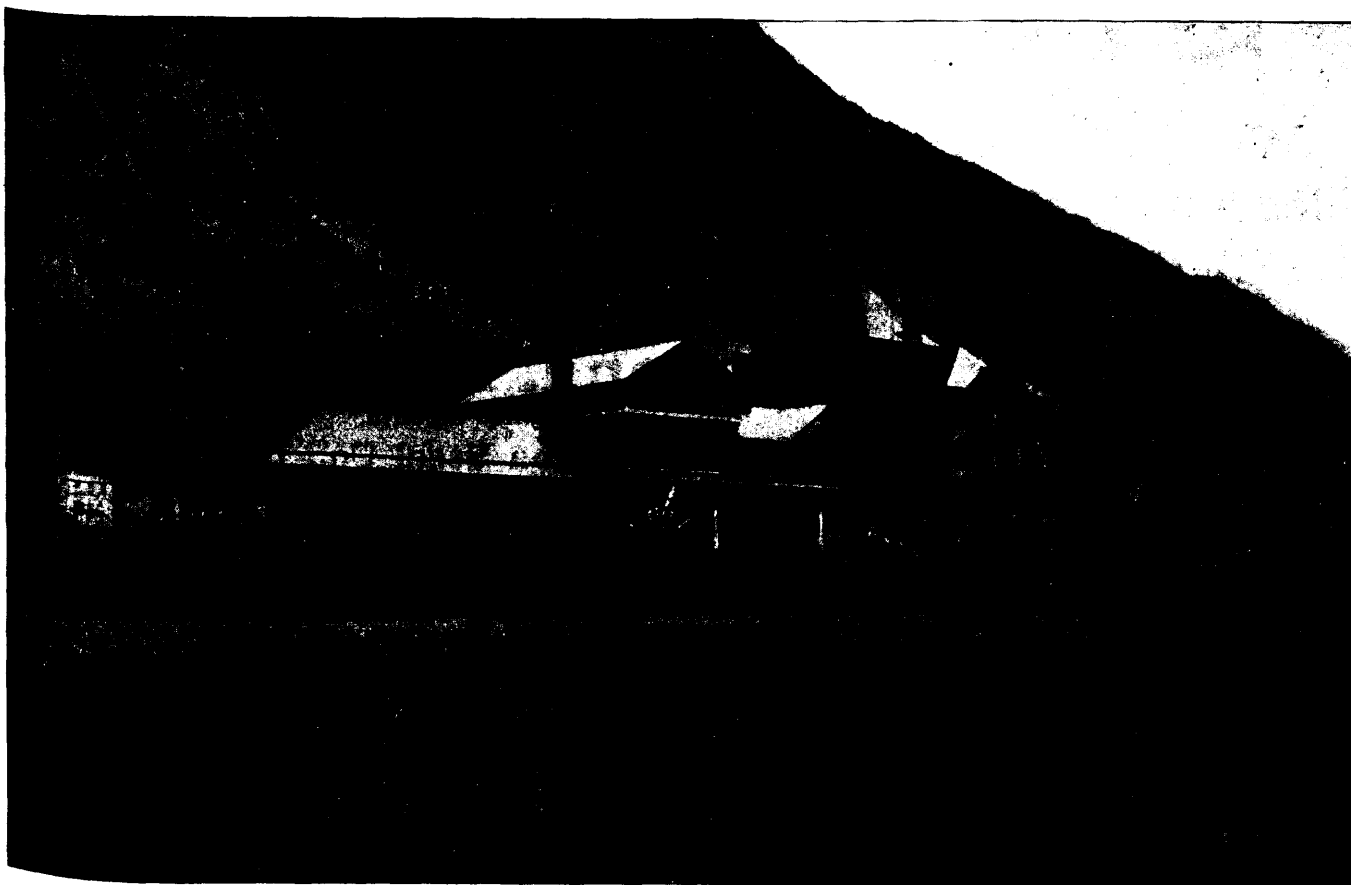
ing on the rotunda are the office, the approaches to the billiard-room (the present dining-room), the bar and lavatories. A short and spacious corridor leads from the main entrance along one side of the rotunda to the grand central staircase and the two electric elevators, which are in the center of the building, also to the dining-room, which will be 120 by 48 ft., with large plate glass windows reaching to the floor, facing on to Georgia and Hare streets. A feature of the dining-room is that there will be no columns whatever in the center of the room, the superstructure being carried by large steel trusses. It will be finished with hardwood floor, panelled ceiling and oak panellings, and will be an exceedingly bright and cheerful room. There is also a private dining-room, and guests' servants' dining room, with a private staircase from the bedroom floor. Only two staircases are provided on the ground floor, but

ventilating and of steam heating will be installed. The building is to be erected in a most substantial manner, steel frame work being used, finished with light grey pressed bricks and terra cotta trimmings on the outside, and plastered on steel laths inside, thus making it practically fire-proof. The general design is a classic Renaissance style, and shows a very substantial building, having ample chaste lines with delicate enrichments. The estimated cost of hotel and fittings is \$400,000.

The designs for these hotels were prepared by F. M. Rattenbury, architect, Victoria, B.C.

RAILWAY APPOINTMENTS, ETC.

Canadian Northern Ry.—W. Phillips has been appointed General Agent in charge of the Co.'s freight and passenger business in



MOUNT STEPHEN HOUSE, FIELD, B.C.

style customary at C.P.R. hotels. Hot water heating is provided, and a plant for gas lighting has been installed. An illustration of the hotel is given on this page.

Plans have been completed for the construction of a large modern hotel at Vancouver, and a contract has been let for the first part of the work. The hotel will have its main frontage on Georgia street, and the part now under contract is being built on the vacant ground immediately to the west of the present hotel. As soon as this wing is completed so as to be available for use as an hotel of about 80 bedrooms, the existing building, except the last built wing containing the dining-room, will be torn down and rebuilt in conformity with the new design. The plans for the completed hotel provide for a main entrance from Georgia st. through a fine arcaded corridor to a spacious rotunda, 50 by 60 ft., finished with a glass dome and tiled pavement, and elaborately decorated walls. Open

additional staircases are arranged at the main angles of the corridors on the upper floors. The ladies' entrance is off Granville street, and with the reading-room is so arranged that the hotel can be entered and the stairs and dining-room reached without necessarily passing through the rotunda. In the basement are many large, well-lighted sample-rooms for travellers, together with the usual store-rooms. The bedrooms are provided on the 1st, 2nd and 3rd floors, their sizes being 13 by 16 ft. to 15 by 16 ft.; one-half of the guests' bedrooms having bath rooms attached, and provision is made by which some additional bedrooms can be built, when required, without interfering with the general design of the building. The interior of the building will be divided into sections by fireproof walls, and fireproof doors are to be provided in the corridors, while balconies with iron ladders will be fitted at the end of each corridor. A complete system of

Ontario, west of Kingston and Sharbot Lake, to the Detroit River. Temporary office, Toronto Railway Chambers, Toronto.

J. B. O'Brien's appointment as General Roadmaster of all lines was mentioned in our last issue. The district roadmasters are as follows:—W. Shanks, Winnipeg, with jurisdiction from Beaudette, Minn., to Portage la Prairie, Man., including branches, and also the branch from Winnipeg to Pembina, N.D.; A. Fraser, Port Arthur, with jurisdiction from Port Arthur to Rainy River, Ont.; C. W. Tyson, Belmont, Man., with jurisdiction from Morris to Brandon, Man., including the Souris branch; N. Wocks, Dauphin, Man., with jurisdiction over all lines west of Portage la Prairie, Man.

Canadian Pacific.—P. A. Peterson, heretofore Chief Engineer, having been appointed Consulting Engineer, H. E. Vautelet, Assistant Chief Engineer, will, until further notice, perform the duties of Chief Engineer.