

### STONY CREEK AND FONTHILL FRUIT GARDENS.

foreground, and just below some of his nursery stock, while in the mid-distance Thorold and to the left St. Catharines is barely distinguishable.

A visit to Fonthill would be incomplete, if it did not include the Fonthill Nurseries, the most extensive in the Dominion, covering in all, about 700 acres

tain ash, in the middle background a fine hedge of *Spiraea Van Houtti*, and on the right one of Norway Spruce, beautifully trained, and in the rear a row of *Pyramidal Arbor Vitae*, which is adapted to become a beautiful ornamental hedge. On the left is seen a variegated *Dogwood*, *Paul's Double-flowering Thorn*, and a *Scotch*

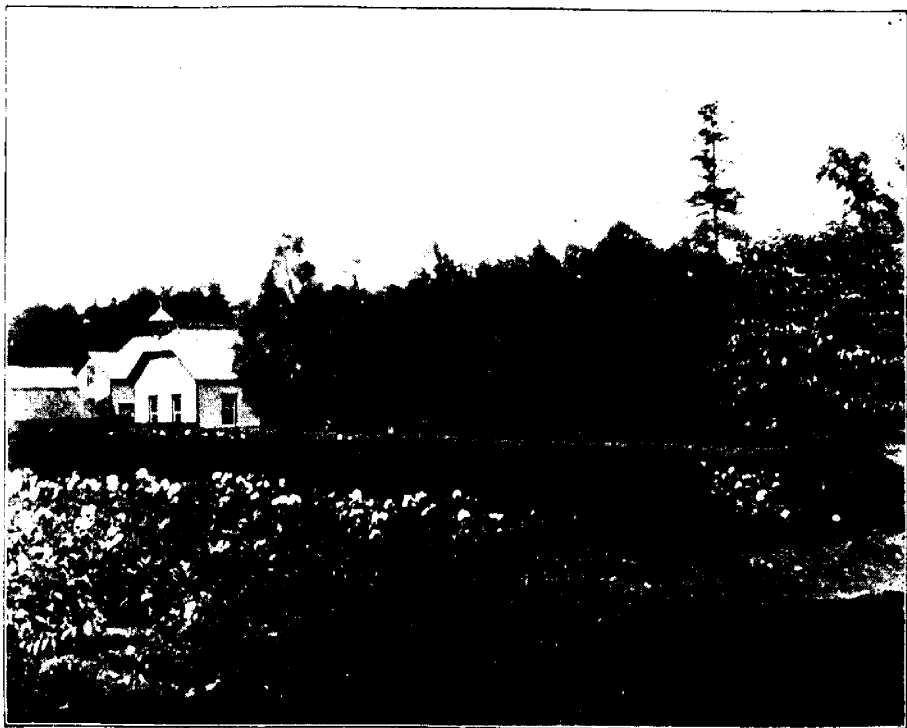


FIG. 1163.—PEONIES, NORWAY SPRUCE HEDGES AND OFFICES, FROM PHOTO.  
BY MISS MABEL F. WOOLVERTON.

of ground. Desiring to see the rose plantation, then in their full glory, we visited these nurseries, and were very courteously treated by the proprietors, Mr. W. E. Wellington & Mr. E. Morris, who furnished carriages for carrying the writer and his assistant, with accompanying cameras, through their grounds.

The entrance (Fig. 1164) is very pretty, having on the right a fine Weeping Moun-

pine. Driving in past the greenhouses and offices, we passed some large gardens of beautiful peonies of all colors. A snap from this point looking back toward the entrance with a Norway Spruce hedge near at hand, was too good to miss (Fig. 1163). In addition to the trees before mentioned it shows a fine Cut leaved Weeping birch near the office.

From here we were driven through