

We Want You all to Know of the Unusual Values Offered During OUR 25c. SALE.

Look Over the List:

Infants' Hose . . . 25c.
Infants' Bands . . . 25c.
Infants' Bonnets . . . 25c.
Infants' Bibs . . . 25c.
Infants' Dolls . . . 25c.
Infants' Rings . . . 25c.

Children's Stockings 25c.
5 to 9½; worth 40c.
pair.

Children's Neckties 25c.
Children's Combs . . . 25c.
Children's Gold Washed Rings . . . 25c.
Children's Painting Books . . . 25c.
Children's Fairy Tales . . . 25c.

FOR THE TOILET.
Powder Puff . . . 25c.
Compliment Powder . . . 25c.
Shampoo Powder . . . 25c.
Tooth Brushes . . . 25c.
Hair Brushes . . . 25c.
Turkish Towels . . . 25c.

FOR LADIES.
Black Cotton Hosiery . . . 25c.
Dress Shields . . . 25c.
Neck Cords . . . 25c.
Undervests . . . 25c.
Collars . . . 25c.
Cashmere Gloves . . . 25c.
Leatherette Belts . . . 25c.
Vanity Cases . . . 25c.
Brooches & Rings . . . 25c.
Ear Rings . . . 25c.
Vests & Hair Nets . . . 25c.

FOR MEN.
Purses . . . 25c.
Tobacco Pouch . . . 25c.
Leather Belts . . . 25c.
Soft Collars . . . 25c.
Braces . . . 25c.
Cotton Work Gloves . . . 25c.
Novels . . . 25c.
Scarf Pins . . . 25c.
Sleeve Links . . . 25c.

These and many other articles, all of exceptional value, are to be had during the remainder of this week at our ANNUAL 25c. SALE.

Templeton's.

Richness,
Fragrance,
Natural Purity
and Delicacy.

Are all its qualities
which appeal to
discerning palates.

"ARMADA,"

The Cup that Cheers.

In 1 and 1-2 lb.
packages. Never
in bulk.

Hardwood Flooring!

Birch, Beech and Maple.

We are now booking orders for a carload of Maple Flooring below pre-war prices.

C. A. HUBLEY,

Call 206 Water St. Phone 950. Write Box 999, St. John's.

Improvements Continuing.

The Municipal Council are still continuing the improvements to the various water mains and sewers throughout the city. On Casey Street some 300 yards of new piping are now being laid and the work is progressing favorably. At Rennie's Hill the Council employees are engaged on a big job of replacing the present sewer pipes, with others of larger diameter. The work is very difficult owing to the main water lines and the sewer pipes crossing at several places. The work of widening the upper part of Pleasant Street has been completed, and the thoroughfare is now very much improved. The vacant land at the foot of Lime Street has also been levelled off and the street now presents a much neater appearance.

The British Empire Exhibition.

"AN EPOCH-MAKING EVENT."
By Robert Donald, L.L.D., Chairman of the Publicity Committee.

A national appeal is being made by the Prince of Wales to the heads of public bodies throughout the United Kingdom in support of the British Empire Exhibition. The response to that appeal will determine whether the exhibition, which is under the patronage of the King, the presidency of the Prince, and has the financial help of the Government, will be held in 1923 or at all.

The Executive Committee (headed by Lord Morris) has planned an exhibition to be held at Wembley Park on a scale never before attempted in this or in any other country. It is confident that it will be as great an epoch-making event in trade, industry, education and science, as was the first universal exhibition held in Hyde Park on the initiative of the Prince Consort.

The purpose of the exhibition is to demonstrate the wealth and resources of the Empire in every phase of industrial and human activity. The colossal undertaking will occupy a site of 120 acres. The preparation of the ground, the erection of the buildings and the organization of the exhibition will cost more than £1,000,000. A guarantee fund of this amount must be raised. Towards that fund the Government, with the sanction of Parliament, has contributed £100,000. The present appeal is, in aid of the fund. No financial payment is required of the guarantee. They will only be called upon to contribute in the almost inconceivable contingency of the exhibition becoming a financial failure.

The exhibition, which the Dominion Premiers in London have promised to support, will be the first attempt to bring home producers, manufacturers and merchants into direct touch with the products of the Overseas Dominions, India and all British territories. It will also be a many-sided Imperial Conference, concerned not only with the Empire's material resources, but with problems affecting its Government, development and progress which will be discussed at congresses. The organizers, realizing that the success of an exhibition depends as much on side shows as on its more serious aspects, are planning novelties for amusement and relaxation which will make Wembley Park a national pleasure ground. The Football Association has chosen it as their permanent home where cup ties and other important matches will be played. A national sports ground capable of accommodating 125,000 spectators is now being laid out. The fact that the Football Association has chosen Wembley Park proved that it is the most accessible spot available. There is no open space which is better served with transport facilities, train, tram or omnibus.

Carefully Prepared Estimates.

To ensure further the financial success of the British Empire Exhibition, the Executive are entering into arrangements to enable the exhibition to receive a percentage of receipts from all sources until such time as losses incurred are covered. While these precautions are taken it is expected that the income will greatly exceed guarantee fund. Sir Richard Vassar Smith, Chairman of the Guarantee Fund Committee, says that "the very carefully prepared estimates foreshadow a substantial credit balance which, by arrangement with the Government, is to be devoted to some public object." Until the guarantee fund reaches at least half a million, a serious start cannot be made, and in order that the exhibition may be held in 1923 it is essential that this amount should be provided within the next few weeks.

The exhibition has a many-sided appeal. It is a patriotic demonstration, a gigantic display of the Empire's resources, means of increasing inter-Imperial trade, a national playground, and, as the Prince of Wales also sees it, "a fitting commemoration of the triumph of our cause in the Great War," by uniting again to develop constructive work, the vast potential resources and the manufacturing power of the Empire. The Prime Minister has expressed the hope that "it may be organized on a scale worthy of the cause it is intended to commemorate."—Yorkshire Observer.

Edward's Restaurant for Burns, etc.

Something Like Speed.

One of the most interesting of recent discoveries in connection with astronomy is that the older a star grows, the faster does it move.

A star, like an express train, takes time to get up speed.

In the case of the train, however, it is a matter of a few minutes only; with a star it is millions of years. The speed of the fastest star is about three hundred miles per second. This celestial racer is invisible with the naked eye, but has a number of other means of identification for the convenience of astronomers.

It has been found that the average velocity of faint stars is much greater than that of brighter ones. Twenty-eight faint ones have been found to have an average velocity of 138 miles per second, whilst the speed of nine very bright ones averaged only eighty miles per second.

Judged from the standard of speed, our own sun, which would appear as a star if it was far enough away from us—is a comparative infant. Its speed is only about twelve miles per second.

"Laugh and grow fat" is an old axiom. We advise the use of a good tonic, named "Bick's Tasteless". Price \$1.00; postage 20c. extra—specify.

Fashion Plates.

A SPLENDID HOUSE DRESS FOR MATURE FIGURES.



Pattern 3656 is here illustrated. It is cut in 4 sizes: 34, 36, 38, 40, 42, 44 and 46 inches bust measure. A 38 inch size will require 5 yards of 36 inch material. The width of the skirt at the foot is 2 yards.

Gingham, chambray, figured percale, poplin, repp, linen and calico may be used for this model. The sleeve may be finished in wrist or elbow length.

A pattern of this illustration mailed to any address on receipt of 15c. in silver or stamps.

A Dainty Dress for Mother's Girl.



Pattern 3660 is here charmingly portrayed. It is cut in 4 sizes: 4, 6, 8, 10 and 12 years. Size 10 requires 3½ yards of 28 inch material.

Dotted Swiss, organza, crepe, crepe de chine, santon, embroidered voile, poplin, silk, gingham, percale and linen are attractive for this model. The plastron may be omitted. The sleeve may be in "short" or wrist length.

A pattern of this illustration mailed to any address on receipt of 15c. in silver or stamps.

No. 3656 and 3660 each cost 15c. each.

Name and address of person to whom pattern is to be sent.

Address in full.

Size.

NOTE:—Owing to the continual advance in price of materials, we are compelled to advance the price of patterns to 15c. each.



SPORTING GOODS!

CARTRIDGES—Black Powder, 10 and 12 G, BB, 1, 2, 3, 4, 5, 6, 8.

CARTRIDGES—Smokeless, 10 and 12 G, BB, 1, 2, 3, 4, 5, 6, 8.

BRASS and PAPER SHELLS, 10 and 12 G.

CARTRIDGES, 303, 30/30, 44, 45/70, 32, 22, Long and Short.

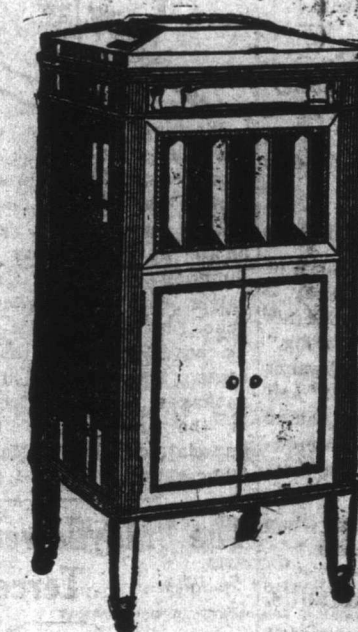
PRIMERS, CAPS, POWDER, SHOT, WADS—Felt and Cardboard.

RELOADING SETS, RE-CAPPERS, EXTRACTORS, WHISTLES.

22 C. RIFLES, BREECHLOADING GUNS, PUMP GUNS, AUTOMATIC RIFLES, 44 WINCHESTER RIFLES, REVOLVERS, ETC., ETC.

BOWRING BROTHERS, LIMITED

Hardware Department



The Only Non-Set Automatic Stop is on the Columbia Grafonola

THE greatest improvement ever made in the phonograph is the Columbia Non-Set Automatic Stop, which is now an integral part of the new Columbia Grafonola.

With this improved instrument you simply place the tone arm needle on the record, and the stopping takes care of itself.

There is nothing more for you to do—no stop to set at a given point, as in other phonographs. Come in and see our latest models.

U. S. Picture & Portrait Co.
Grafonola Department.

A BINDER FOR EVERY SHEET

Loose Leaf
Ledgers
Sectional Post
Binders
Sheet Holders
Binding Devices
of every
Description

DICKS
PHONE
47

Ready Made
Accounting
Forms
Bill and
Charge Systems
Commercial
Records
for every
Office

A SHEET FOR EVERY BINDER

League Football.

STAR - C. E. L.

The Star-C.E.L. football match which took place last evening on St. George's Field was witnessed by one of the largest gatherings of enthusiasts for the season. The game proved interesting, and individual play was rather

conspicuous. During the early part of the first half no scoring was done but shortly before the whistle sounded, Adams of the Star team found the net.

In the second half Evans notched up No. 3 for his team, and the game ended Star 3 C.E.L. 0. The C.E.L. lost several good chances to score, and their supporters were disappointed at their lack of speed. Three teams are now in

the running for first place and tonight's match will be watched much interest.

League Football, St. George's Field, this Tuesday evening 6.30 sharp. Guards vs. R.L. Admission 10 cents; Ladies free. Grand Stand 10 cents extra.

"Edgehill," Windsor, N.S.

THE ARMY

THE BISHOP OF

MISS MILDRED

Graduate

Thorough English

For Calendar and

TERMS: BEGIN SEP

1926, 10c.

ENTERED UNDER THE

THE SC

of Saint Mary's Ho

a two and one-half

School or equivalent

monthly allowance of

ten-month period.

Students are eligible

for Home a separate

for further particula

ing.

THE

en

ne

for

ph

8

0000000000

Have your of

chilly mornings

COSY GLOW HE

Wm. No

Wa

aug 26, 1921

0000000000

'Ph

When you wa

active stocks of

bid for German r

the prevailing ex

rency, call 1154.

Ask us to adv

ing on margin, s

well-managed di

for an advance in

J. J. LACEY

STOCKS

0000000000

W

am v

Par

Wed

and

we h

to a

taste

Gifts

your

beau

T

0000000000

W

am v

Par

Wed

and

we h

to a

taste

Gifts

your

beau

T

0000000000

W

am v

Par

Wed

and

we h

to a

taste

Gifts

your

beau

T