

MUNICIPAL ENGINEERS, CONTRACTORS AND MATERIALS

WILLIS CHIPMAN

Hon. Grad. McGill University.
M. Can. Soc. C.E. M. Am. Soc. C.E.
Mem. Am. W.W. Ass'n.
**WATERWORKS, SEWERAGE WORKS, GAS
WORKS, ELECTRIC LIGHT AND
POWER PLANTS**
Reports, Surveys, Construction, Valuations
103 BAY STREET - TORONTO

R. E. SPEAKMAN, C.E.

A. M. Inst. C. E., 1878.
CONSULTING ENGINEER

Waterworks, Sewerage and Sewage Disposal.
Municipal Improvements.
Granolithic Pavements.
Electric Light Plants.
Drainage and Irrigation of Land.
Coal Handling Plant and Machinery.
Plans, Specifications and Estimates.
Construction and Valuations.

Canada Life Building - TORONTO

Roderick J. Parke

Am. Can. Soc. C.E., A. M. Amer. Inst. E.E.
CONSULTING ENGINEER
Hydraulic Power Development. Long Distance
Power Transmission. Steam Plants, Electric
Lighting and Power Systems. Tests.
Valuations. Reports.

51-51 James Building, C. E.
King and Yonge Streets **TORONTO, CANADA**
Telephones: (Office)—Long Distance Main 3047
(Residence)—Long Distance North 2204
Telegraphic address: "Rodparke."
W. U. Code, Univ. Edition.

WILLIAM H. BREITHAUP, C.E.

M. Am. Soc. C.E., M. Can. Soc. C.E.
CONSULTING STRUCTURAL ENGINEER

Foundations, Bridges, Buildings.
BERLIN, ONT.

JAMES C. KENNEDY,

MEM. CAN. SOC. C. E.

Civil and Hydraulic Engineer

Examinations, Reports, Plans, Estimates,
Supervision of Construction of Water
Powers, Waterworks, Sewerage, etc.
P. O. Box 131. **HAWKESBURY, ONT., and
877 Dorchester street, MONTREAL, QUE.**

ROSS & HOLGATE

**Consulting and
Supervising Engineers**

Waterworks, Electric Light and Power
Plants, Structural Work, Reports,
Estimates, Arbitrations.

80 ST. FRANCOIS XAVIER ST. - MONTREAL

RAILS For Contractors, Switches, Gir-
ders, &c.
New and Second Hand.**LOCOMOTIVES AND CARS**

John J. Gartshore

83 Front St. West,

(Opposite Queen's Hotel.) **TORONTO.**

FIREMEN'S LADDERS**LADDER TRUCKS**

We make the lightest, quickest,
strongest and cheapest. Every Town
and Village needs them and can afford
them. They will save 50 times their
price in insurance premiums. Write
for circulars and quotations.

THE WAGGONER LADDER CO., Limited
LONDON - - ONT.

John H. Jackson

CIVIL ENGINEER

**WATER POWER, ELECTRIC RAIL-
WAYS, STRUCTURAL STEEL.**

Niagara Falls, Canada

Associated with Charles H. Mitchell,
C. E., Hydraulic Engineer.

CHARLES BRANDEIS

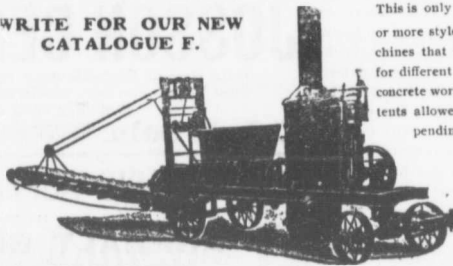
A. M. Can. Soc. C. E., A. M. Amer. Inst. E. E.

CONSULTING ENGINEER

Estimates, Plans and Supervision of Hydraulic
and Steam-Electric Light, Power and Railroad
Plants. Specifications, Reports, Switchboard
Designs, complete Factory Installations, Etc.
Long Distance Telephone Main 32 6.
Cable Address: Brandeis-Montreal.
W. U. Code, Univ. Edition.
Liverpool & London & Globe Building.
MONTREAL

The Greatest Concrete Mixer Yet Made

**WRITE FOR OUR NEW
CATALOGUE F.**



This is only one of 30
or more styles of ma-
chines that we make
for different kinds of
concrete work. 10 pa-
tents allowed, others
pending

NUMBER OF PATENTS
35,664
672,934
675,035
675,036
675,037
698,182
698,910
699,667
699,668
701,512

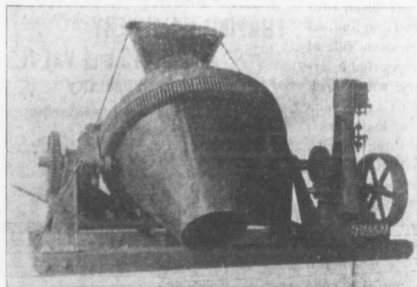
Also
Mortar and
Asphalt Mixers

DRAKE STANDARD MACHINE WORKS

Factory,
7-9-11-13 Garden Street, Chicago.

Office and Salesroom, 208-300-302 W. Jackson Boul.
CHICAGO, ILL., U. S. A.

Eastern Agent, Walter S. King, 27 St. John's Place, Brooklyn, N. Y.



**A few Good
Points of the
SMITH
CONCRETE
MIXER**

Large Capacity per day
Quick and Thorough Mixing
Simple and Strong Construction
Well Protected Working Parts
No Preliminary Laying Out
Discharges by Tilting While Running
Mounted and Equipped for
Any Class of Concrete Work

W. H. C. MUSSEN & CO.
MONTREAL

**CANADIAN
CONTRACTOR'S
HAND-BOOK
and
Estimator**

Third Edition

Price \$1.50; to
subscribers of
the Canadian
Architect and
Builder, \$1.00.

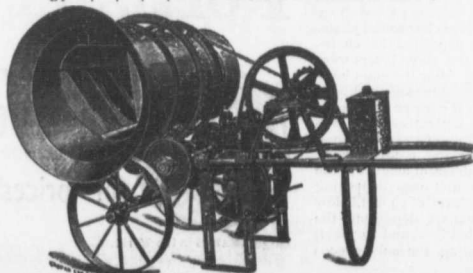
SEND FOR A COPY

C. H. Mortimer
Publishing Co.
Toronto,

Please mention THE CONTRACT RECORD when corresponding with advertisers.

THE McKELVEY CONCRETE MIXERS

MANUFACTURED BY **W. A. McKELVEY,** McKinnon Building, TORONTO.



These machines
are made to mix
either continu-
ously or in
batches, and can
be operated
either by Hand,
Steam or Gas-
oline Power.