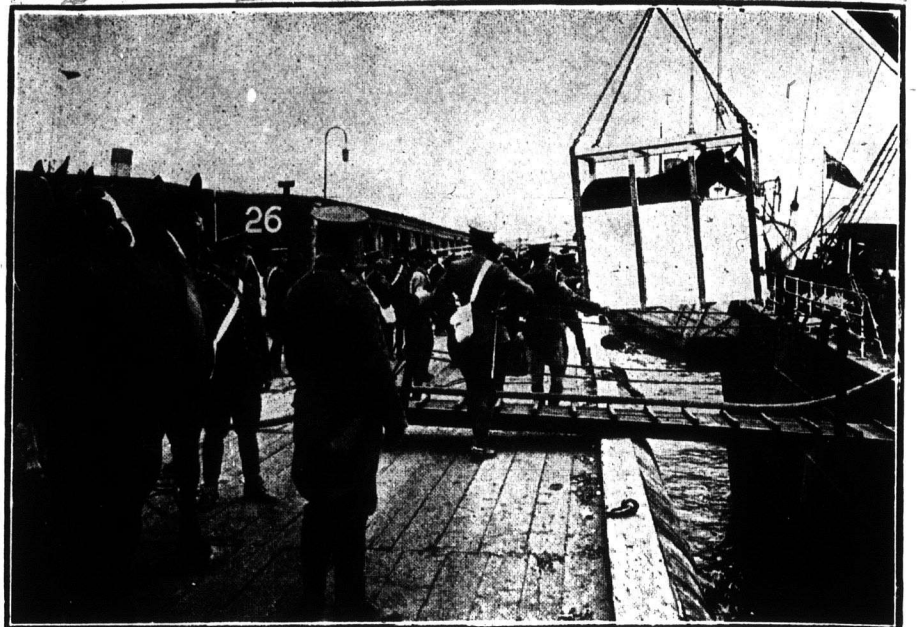


Alongside the Transports.
Canadian Expeditionary Force took some fine horses. Some of the troopers are here seen preparing to load their horses on the transports. Note the 4.7 gun mounted on the deck of the "Montezuma."



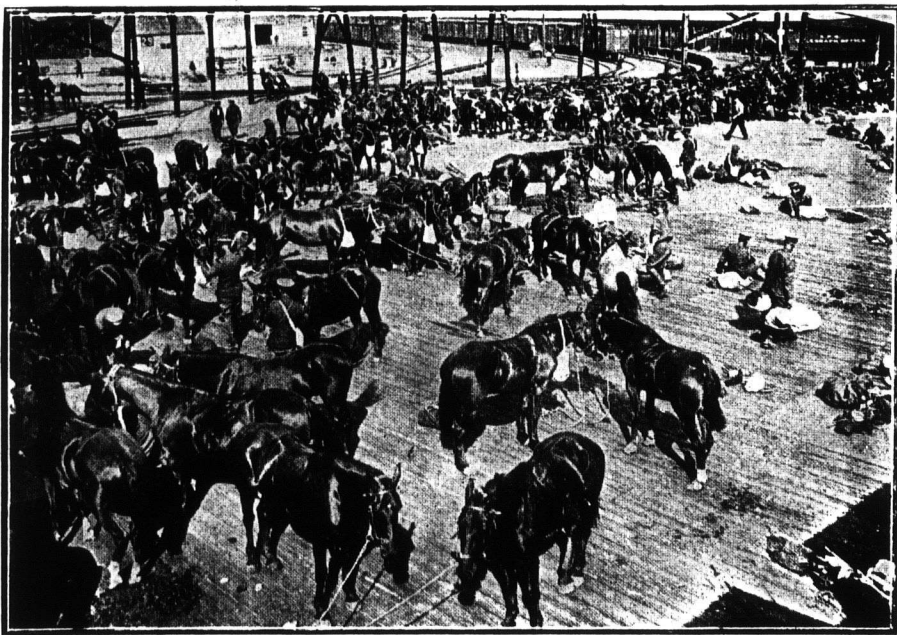
How the horses were put aboard. This interesting illustration depicts the methods employed in loading the horses of the Royal Canadian Dragoons of the Canadian Expeditionary Force. They embarked on the transport "Laconia," which is seen alongside the quay.



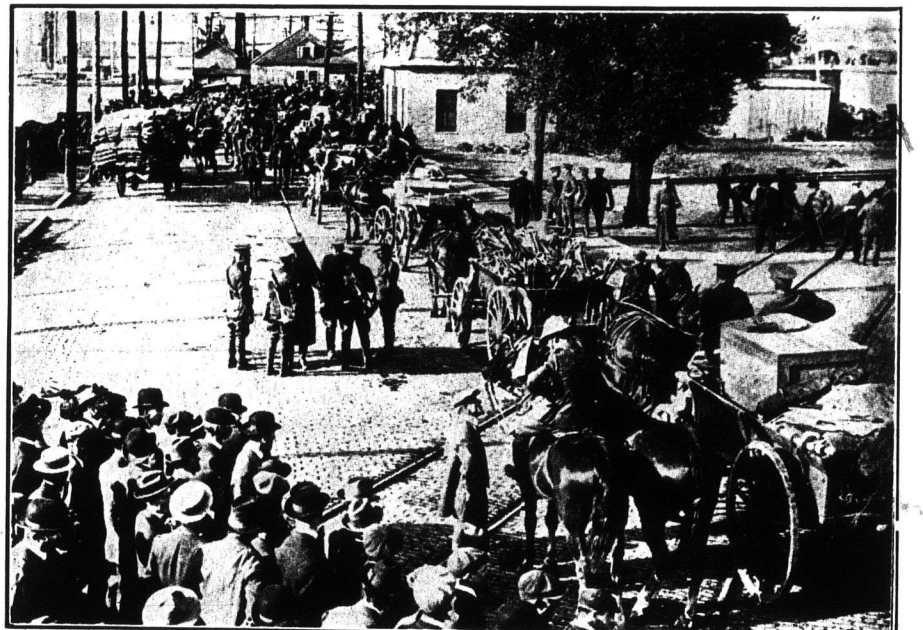
Canadian Field Hospital No. 1, which accompanied the Canadian Force to the front, on the march from Valcartier to Quebec prior to embarkation.



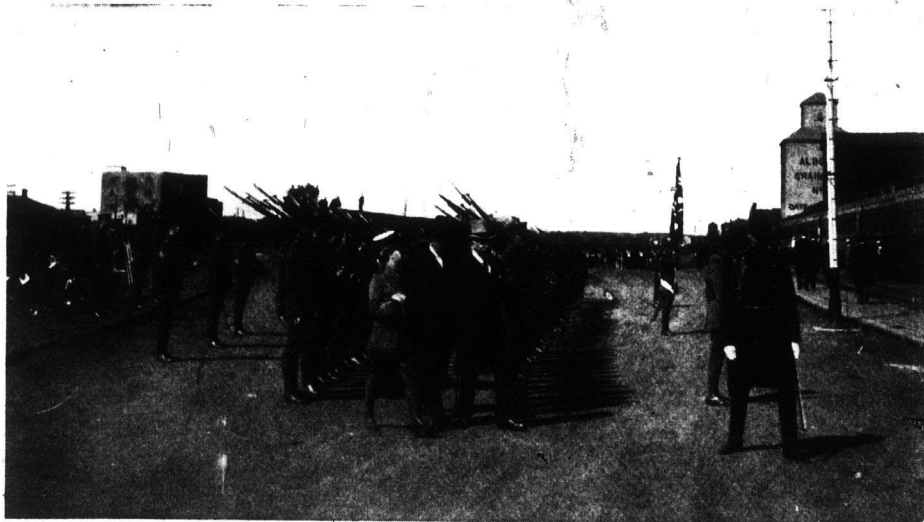
The Serious Business of Moving an Army Division.
Over 30,000 Canadian troops with full equipment have been safely landed in England.



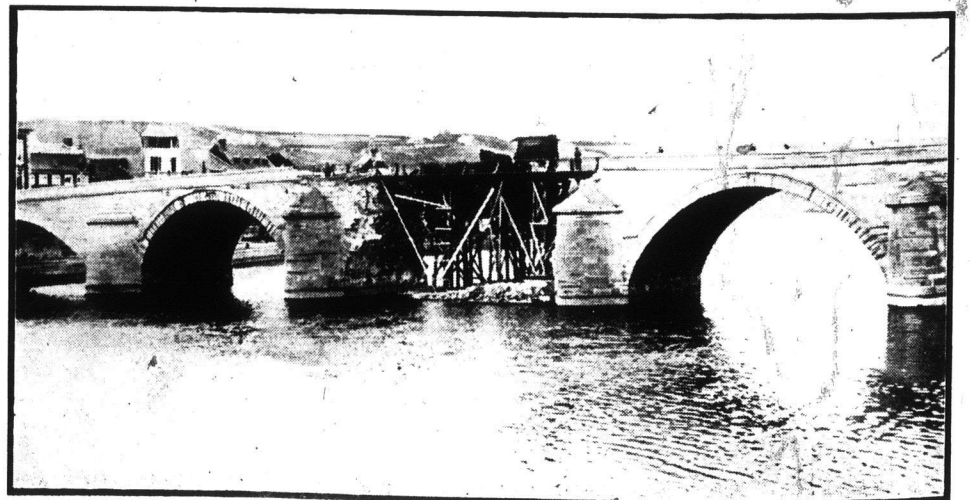
Embarkation of Alberta Horse. The arrival of the Alberta Horse at the Quebec wharf ready to embark on the transports.



Canadian Expeditionary Force off to Old England.



His Royal Highness the Duke of Connaught reviewing troops at Edmonton, Alberta, prior to their entraining for the front. In the direct rear Lieut.-Governor Bulyea.



Ruined Belgian Bridge repaired by German Engineers.