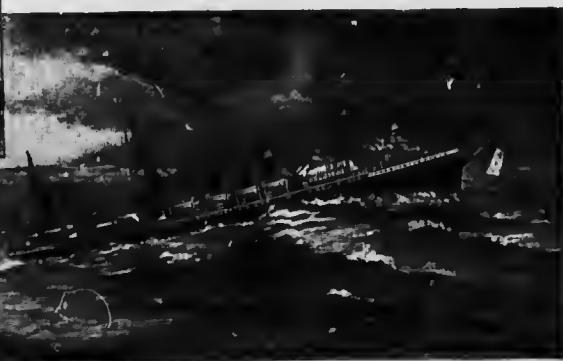


We will get on a great steamship.

Ocean and have reached another continent! This land, which we reach by sailing to the east, is called the Eastern Continent.

Near the southeast corner of the map you may see a very large island. What is its name? The word *Australia* means "southern country." What is the difference between an island and a continent? Aus-



The high waves sometimes dash over the ship.

TOPICS FOR ORAL OR WRITTEN WORK.

(Tell about each Topic in Sentences.)

- I. THE STEAMSHIP. Its material. Its size. Its use. Its swiftness.
- II. THE JOURNEY. Starting place. Direction of journey. Time of journey. Stopping place.
- III. MID-OCEAN. By what the ship is surrounded. Where the sun seems to rise and to set.

7. The Eastern Continent.

How many continents have we learned about? What ocean between them? How long does it take to cross from one continent to the other? On which continent do you live? What is the other continent called?

The shape of the Eastern Continent is something like this outline.

Are most of the islands near this continent directly east of it? Are they directly south? The direction halfway between south and east is called *southeast*; that between south and west is *southwest*. What is the direction between north and west called? Between north and east? In what direction from the Eastern Continent are most of the islands?

tralia is generally called a continent. Why?

Compare the map of America with the map of the Eastern Continent. Which of these continents is the larger? It is nearly twice as large as America. Name the three continents in the order of their size.

