

Dealers and Fixers of
English and American
Enameled Tile
Glazed En. Tile
Ceramic and
Roman
Venetian
Marble
Mosaics

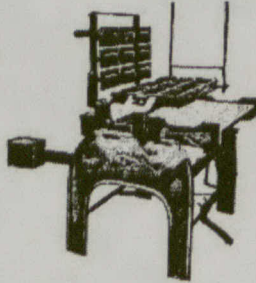
WALL AND FLOOR TILE
Mantels
in Balcony
and Tile
Fireplaces
Phone 6136 Main
8 Albert Street
TORONTO
Robb & Powell

SHINGLE STAINS
FINEST IN THE MARKET
SAMPLES FOR THE ASKING
JAMES LANCMUIR & CO.
Limited
1340-46 Bathurst Street, TORONTO

**CHAMBERLIN
METAL WEATHER STRIP**
A permanent fixture, excludes
draughts, dust and soot. Dis-
places storm sash, 50% cheaper
CHAMBERLIN METAL WEATHER STRIP CO. LIMITED
Phone Main 4319 319 Yonge St., TORONTO

HARDWOOD FLOORING
End Matched, Bored and Steel Polished.
Special attention given to 3/8" and 7/8" Quarter-
cut oak flooring in large or small quantities.
THE SEAMAN KENT CO., LIMITED
160 Bay Street, TORONTO. Factory, MEAFORD, ONT.

The London Cement Pressed Brick Machine



One man operating makes 5000 brick per day.
Don't waste your time operating a cheap machine;
it is capacity and quality that counts.

We are the Largest makers of high grade
Concrete Machinery in Canada

Send for descriptive Catalogue of The London
Cement Brick Machine, The London Face Down
Block Machine, Drain Tile Machine, Sill
Moulds, Fence Post Moulds, Sewer Pipe Moulds,
Concrete Mixers, etc.

The London Concrete Machinery Company
28 Redan Street, London, Ont.

"ATLAS" BUILDING BLOCK

THE ONLY CONCRETE Building Block forming continuous "dead air" space (or hollow) wall, the entire length of the wall, including angles. Well "bonded" in wall. Warm in winter. Cool in summer. FIRE, FROST, and WEATHER proof. EASY to build, having all the facilities of brick or stone work, for bedding plates, sills and bond timber, for joists, &c. IRRESPECTIVE of face work. EASY to manufacture, no expensive machinery being required. Profitable to user and producer.

If a PARTIAL air space in a wall is beneficial (in any way), the WHOLE, or a continuous air space, must be MORE so.
The ATLAS BUILDING BLOCK is rendered more DURABLE and TENACIOUS than ordinary concrete by the use of I. N. D. Chemical Compound—a cheap and profitable mixture to use in all concrete construction (at a cost of 40 cents per cubic yard.)

Special plans and estimates prepared, for all concrete structures, by

JOS. HOGUE, 965 Berri Street
MONTREAL

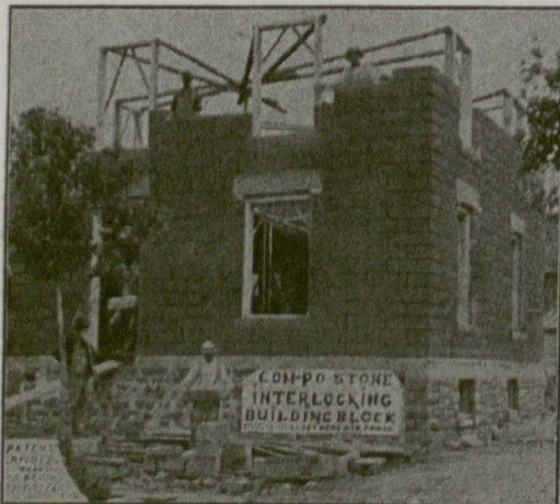
Please mention the CANADIAN ARCHITECT AND BUILDER
when corresponding with advertisers.

GTP
**MAGNETIC BRIDGE
AND ROOF PAINT
FOR STEEL**

now
The Great
Anti-Corrosive Paint
For Metal and All
Structural Work

now
The
Canada Paint Company,
Limited
MONTREAL TORONTO WINNIPEG

The G.T.P. Bridge and Roof Paint is
sold in paste form to be thinned with Lin-
seed Oil and Turpentine or in liquid form
ready for the brush. Samples will be
cheerfully furnished free to Architects,
Engineers or large Corporations by apply-
ing to the Canada Paint Company, Limited,
Montreal, Canada.



Com-Po Stone INTERLOCKING BUILDING BLOCK

THE ONLY CONCRETE Building Block forming continuous "dead air" space (or hollow) wall, the entire length of the wall, including angles. Well "bonded" in wall. Warm in winter. Cool in summer. FIRE, FROST, and WEATHER proof. EASY to build, having all the facilities of brick or stone work, for bedding plates sills and bond timber, for joists, &c. IRRESPECTIVE of face work. EASY to manufacture, no expensive machinery being required. Profitable to user and producer.

If a PARTIAL air space in a wall is beneficial (in any way), the WHOLE, or a continuous air space, must be MORE so.

Com-Po Stone is rendered more DURABLE and TENACIOUS than ordinary concrete by the use of M. F. Chemical Compound—a cheap and profitable mixture to use in all concrete construction (at a cost of 50 cents per cubic yard.)

Special plans and estimates prepared, for all concrete structures, by

G. T. Martin, Architect,
Smiths Falls Ontario
Patent Rights and Chemical Compound for Sale