

TO CORRESPONDENTS.

J. BLACK.—You must state the rate of interest to be allowed by the Savings Bank, also the premium at which you expect to buy bank of Montreal stock. It will also be necessary to say at what rate per cent you wish the dividend upon your stock calculated; without these particulars it is impossible to answer your question.

F. A.—The Coldstream Guards is the oldest corps in the British army, except the 1st Foot. General Monk, in 1660, raised a regiment at Coldstream which was first called "Monk's Regiment," but when Parliament consented to give a brigade of guards to Chas. II, this corps, under the name of Coldstream Guards, was included in it.

LOPEZ.—Detroit is one of the oldest cities in the United States; it was founded by the French in 1670, as an outpost for the prosecution of the fur-trade on the right bank of the Detroit river.

C. E. B.—Every naval or military officer on half pay can be called into active service by the government at any time.

GEO. E.—The word "choir" is pronounced "quirc," and by old writers is frequently spelt so.

DOR.—We did not answer the question because the number is not uniformly as stated.

H. A. E.—St. Sebastian was a Christian martyr condemned to be shot to death by arrows in one of the persecutions of the Church under the Emperor Diocletian. He was fastened to a tree, and after being pierced with a great number of arrows was left to perish.

SHERBROOKE.—We regret that we are unable to comply with your request.

A. C. McL., BROCKVILLE.—We are obliged to you for your courteous attention, but can make no use of the photographs.

ALICE G.—The verses are respectfully declined.

WITTY AND WHIMSICAL.

A REGULAR MYSTIFICATION.—Being caught in a fog.

QUESTION FOR ETYMOLOGISTS.—Do the "roots of words" produce "flowers of speech?"

DANGER TO COMMISSIONAIRES, OR KILLING NO MURDER.—The law provides no punishment for despatching a messenger.—*Punch.*

TOO LARGE A MIND.—A thief's apology, when caught in the act, was that he had a mind so large that he thought everything belonged to him.

THE AGE OF STEAM.—A fine old English gentleman, seeing the numerous large advertisements which adorn the metropolis, remarked with joy that the days of posting had returned.—*Punch.*

MISERABLE PEOPLE.—Young ladies with new bonnets on rainy Sundays, and dresses playing drip, drip, at every step.—A young doctor, who has just cured his first patient, and has no prospect of another.

Why does the atmosphere of a dungeon resemble a great philosopher?—Because it's vault air (Voltaire).

"I come to steal," as the rat observed to the trap. "And I spring to embrace you," as the trap replied to the rat.

An old card-playing dame, when rebuked for her waste of time, replied, "Ah true, there is a deal of time lost in shuffling the cards."

"Would I were a man!" exclaimed a strong-minded woman in her husband's hearing. "Would you were!" was his only comment.

On Lord Howe's return to England, after his memorable victory on the 1st of June, he went one Sunday to his parish church. On seeing him there, the clerk, who was a bit of a wag, gave out the psalm beginning—
"Lord How glorious are thy works!"

PUNCH'S ADVICE HOW TO KILL TIME.—Shoot every day.

Two kinds of fish are plentiful in our rivers now skates and soles.

PASTIMES.

FLORAL ANAGRAMS.

1. The rat of Bleshme.
2. Daniel Nec.
3. I sell dove in glebe.
4. O Sir Scope.

BERICUS.

46. WORD CAPPING.

1. If the cap of a noise be changed, I become an animal; again, and I become circular; again, and I am tied up, again, and I am recovered; again, and I become a large heap, again, and I become a weight, again, and I am a sore, again, and this time adorned with two caps, I am broken into pieces.
2. I am a fruit, change my cap, and I become a companion, again, and I am a tax, again, and I am a part of the body, again, and I am a name (female's); again, and I am behind time; again, and it is my lot; again, and I rested myself on the ground; again, and this time allowed to wear two caps, I am much used by youth; again, and I become what is used at meal times.

SQUARE WORDS.

1. The end of man.
Torn.
To shelter.
Poetry.
To come into.
2. Avarice.
A dress.
A murderer's victim.
A summoner.

CEPHAS.

CHARADES.

1. In the chapel vast my first is seen
Chanting the Vesper Hymn,
And wearing my second, too, 'twixt,
As part of their dress so dim;
My whole is a flower you've oft set eyes on,
But mind how you use it—'tis deadly poison.
2. My whole was a king in ancient times.
My 6, 2, 3, 11, 14 is a fierce animal.
My 12, 10, 6, 6, 13 is an article used at school.
My 4, 5, 1, 7, 11 is a carpenter's machine.
My 8, 9, 3, 10 is a form of medicine.

CEPHAS.

NUMERICAL WORD PUZZLES.

- I.
A hundred, five, one, nought, and an I.
You often may hear, but never can see!
- II.
One thousand, two fives joined, nought, and A X
Is the choicest of blessings given 'mongst men!
- III.
Fifty, a five, one, nought, and E,
Is the emblem of peace to both you and me!
- IV.
Two hundreds, a fifty, a nought, and a K
Is seen by most people, at least once a day.

PROBLEM.

A has by him 1½ cwt. of tea, the prime cost of which was \$384. Now, granting interest to be at 5 per cent. per annum, it is required to find how much per lb. he must sell at B, so that by taking his negotiable note payable at 3 months, he may clear \$84 by the bargain.

ANSWERS TO GEOGRAPHICAL REBUS, &c., No. 81.

Rebus.—Dickens.—1. Dundee. 2. Isis. 3. Cadiz. 4. Kent. 5. Ennis. 6. Niger. 7. Shiraz.

Arithmorems.—1. Sir Edwin Landseer. 2. Sir Godfrey Kneller. 3. William Mulready. 4. Paul Sandby. 5. Sir Joshua Reynolds. 6. Sir Peter Lely.

Square Words.—T R O T.
R A V E.
O V E N.
T E N T.

Charades.—1. Whiskey barrel. 2. Maximilian.

Enigma.—Dream.
Problem.—3 Horses at \$108; 6 Cows at \$40; 18 Sheep at \$15.

ANSWERS RECEIVED.

Rebus.—Bericus, Ana, Violet, Argus, Grove, Ellen B., Geo. H., Den.

Arithmorems.—Ana, Argus, Ellen B., Celt., Den.

Square Words.—Argus, Bericus, Celt, Ana, Grove, Geo. H., Den.

Charades.—Geo. H. Celt, Argus, Ana, Ellen B., Violet, Den.

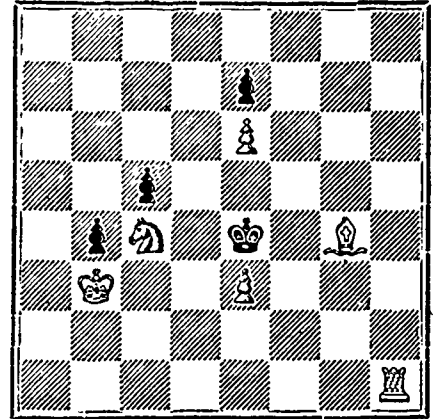
Problem.—Bericus, Argus, Celt, Geo. H., Leo

CHESS.

Answers to correspondents crowded out.

PROBLEM, No. 62.

By E. H. COURTENAY, WASHINGTON, D.C.
BLACK.



WHITE.

White to play and mate in four moves.

SOLUTION OF PROBLEM, No. 60.

- | | |
|------------------|------------------------------------|
| WHITE. | BLACK. |
| 1 Kt to K 5. | Kt to K B sq, or Kt to K Kt 6 (a.) |
| 2 Q to Q 3. | Any move. |
| 3 Q or Kt mates. | |
| (a.) 1— | B takes B. |
| 2 Q to K 2. | Any move. |
| 3 Q or Kt mates. | |

Game played in London, years since, between an Amateur of Boston, and Maelzel's Automaton. The Amateur received the odds of Pawn and move.

REMOVE BLACK'S K, B, P.

- | | |
|------------------------|----------------------|
| WHITE, (Amateur.) | BLACK, (Automaton.) |
| 1 P to K 4. | 1 P to K Kt 3. |
| 2 B to Q B 4. | 2 P to K 3. |
| 3 Kt to Q B 3. | 3 P to Q B 3. |
| 4 P to K 5 (a.) | 4 Q to K Kt 4. |
| 5 P to Q 4. | 5 Q takes Kt P. |
| 6 Q to K B 3 (b.) | 6 Q takes Q. |
| 7 Kt takes Q. | 7 P to Q Kt 4. |
| 8 K B to Q 3. | 8 P to Q R 4. |
| 9 K Kt to Kt 5. | 9 K Kt to K 2. |
| 10 P to Q R 3. | 10 B to Q R 3. |
| 11 Q Kt to K 4. | 11 K Kt to Q 4. |
| 12 Kt to K B 6 (ch.) | 12 Kt takes Kt (c.) |
| 13 P takes Kt. | 13 P to Q Kt 5 (d.) |
| 14 K B to K 4. | 14 P to Q 4. |
| 15 K B to B 3. | 15 B to Q B sq. |
| 16 B to K B 4. | 16 B to K R 3. |
| 17 P to K R 4 (e.) | 17 B takes Kt. |
| 18 P takes B. | 18 Kt to Q Kt 3. |
| 19 B to K 5. | 19 K to B 2. |
| 20 K to Q 2. | 20 P to Q B 4. |
| 21 R to K R 6. | 21 R to Q R 2. |
| 22 Q R to K R sq (f.) | 22 K to Kt sq. |
| 23 P to B 7 (ch.) (g.) | 23 R takes P. |
| 24 K to K 2. | 24 R to K R 2. |
| 25 B takes R. | 25 K takes L. |
| 26 K to K 3. | 26 Kt home. |
| 27 R P takes P. | 27 B P takes Kt P. |
| 28 B to K 2. | 28 Kt to B 2. |
| 29 B to Q 3 (h.) | 29 Kt to K 3. |
| 30 R to Q R sq. | 30 Kt to K B 4 (ch.) |
| 31 B takes Kt. | 31 K P takes B. |
| 32 Q R takes P. | 32 R to K sq (ch.) |
| 33 K to Q 2. | 33 B to K 3. |
| 34 Q R to Kt 5. | 34 B to K B 2. |
| 35 P to K B 3. | 35 R to Q R sq. |
| 36 R takes Q Kt P. | 36 R to Q R 8 (j.) |
| 37 K to K 3. | 37 R to K Kt 8. |
| 38 K to B 4. | 38 R to K 8. |
| 39 Q R to Kt 7. | 39 R to K 7. |
| 40 P to Q B 3. | Black resigns. |

(a) Rather bold to sacrifice P against such a practised antagonist.

(b) Forcing the exchange of Queens.

(c) Compulsory in order to save R's P.

(d) This P is advanced to force the B from his advantageous position.

(e) Better perhaps than to take K P with Kt, for in that case he must necessarily lose that passed P, as it would be no longer defensible.

(f) White has a fine game—every piece on the quiver and ready for an opening into the enemy's camp. Black is certainly out-generalled in his favorite game (g) Well played.

(h) Intending to capture K Kt P.

(j) These long strides with R are unavailing; Black has not the slightest chance to evenrad the game.