

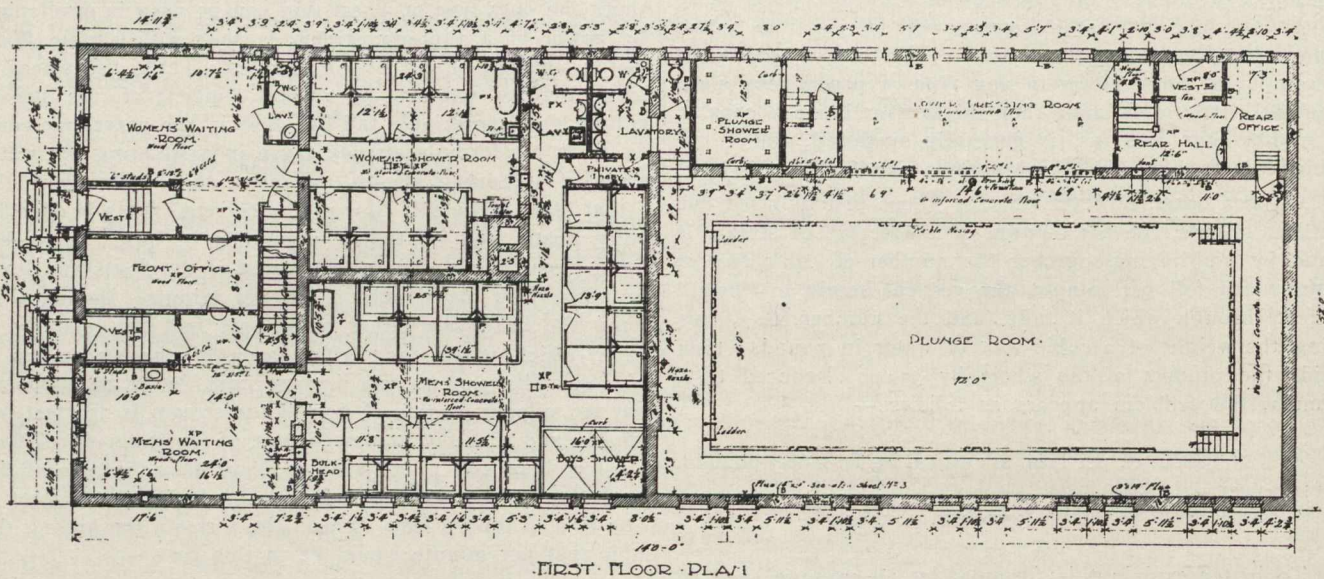
HARRISON BATHS.

Handsome Institution Recently Established by the City of Toronto.

A welcome innovation in the history of the city of Toronto was marked by the erection and the completion, this month, of a public bath-house.

compound mixed at the same time as the concrete. The interior walls and divisions of the showers are of Italian marble, while glazed tiling is also extensively used. The floors are of reinforced concrete. A key to the materials of construction is given in the accompanying plan of the lay-out.

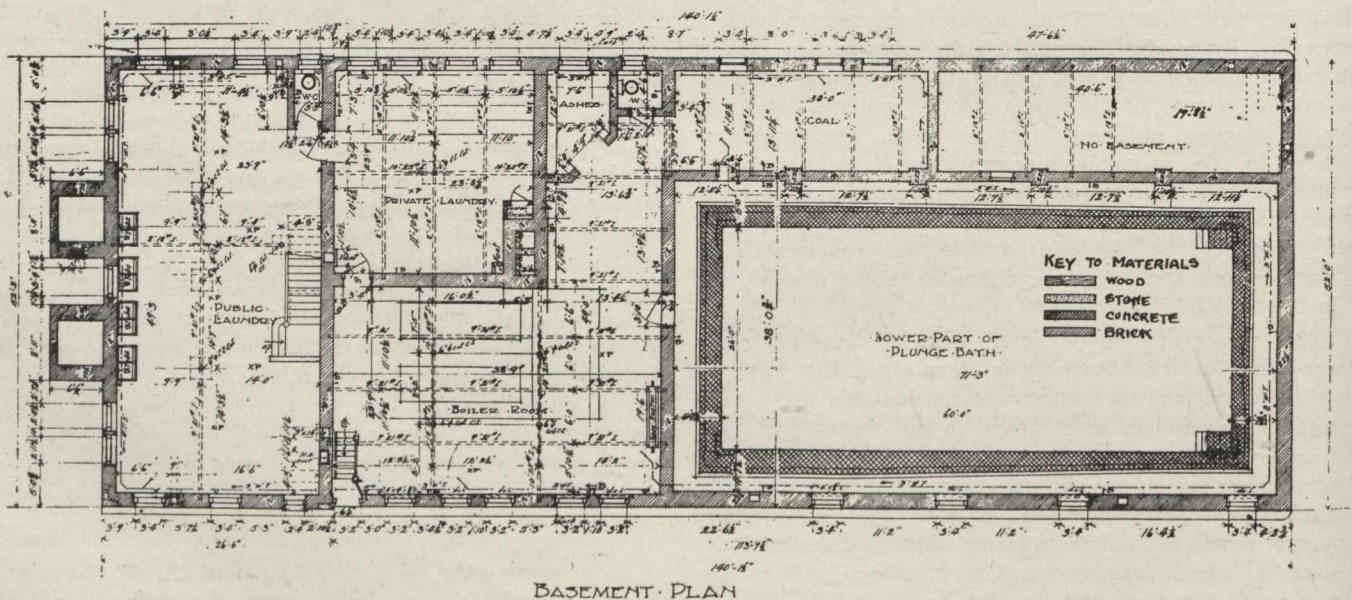
The operation of the institution is under the direct supervision of Mr. Roland C. Harris, the property commissioner,



FIRST FLOOR PLAN

From the accompanying illustrations may be formed some idea of the structure, which cost \$46,000, and has a frontage of 52 ft. 3 in. on the south side of Stephanie Place by a depth of 140 ft. 1½ in. It is of brick, stone, and concrete, the front portion for a depth of 26 ft. 6 in. being two-storey and basement, the balance one-storey and basement, but owing to the fact that the shower and plunge rooms are

who, in 1906, investigated the question of establishing baths, and, in his report said:—"I cannot too strongly recommend the erection of a public bath house. When first instructed to look into the question, I regarded it largely as a philanthropic fad, but, after viewing its offices and work, was thoroughly imbued with the absolute necessity of its creation and existence."



BASEMENT PLAN

spacious and lofty, the elevation is practically uniform throughout.

Concrete was used exclusively in the construction of the swimming pool which was waterproofed with a water-repelling

Cost of Maintenance.

Appended is a reliable estimate of the cost of operating the plunge from 2 p.m. to 11 p.m. daily (Sunday excepted), and the showers from 9 a.m. to 6 p.m. daily, with the excep-