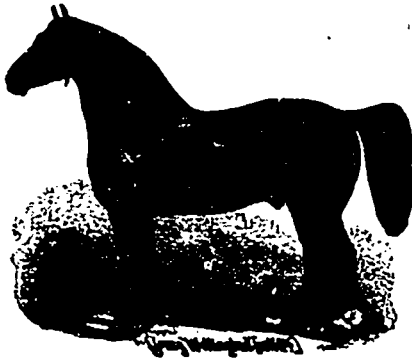


"SHADELAND,"
THE LIVE-STOCK EMPORIUM OF THE WORLD.

LARGE IMPORTATIONS
 ARRIVING WEEKLY
 OF THE
Most Perfect Animals
 TO BE FOUND.



Unparalleled Collections!
SUPERIOR QUALITY!
Choicest Breeding!

CLYDESDALE, PERCHERON-NORMAN,
 —AND—
ENGLISH DRAFT HORSES,
Trotting-bred Roadsters, Imported Coachers and Shetland Ponies,
HOLSTEIN AND DEVON CATTLE.

NO OVER-FED, PAMPERED OR WORN-OUT STOCK.

OUR COLLECTION OF DRAFT HORSES now embraces all the leading breeds in this class, affording each customer an unusual opportunity for comparing merits, and selecting such as please him best, or such as he thinks best suited to his section or purpose, or, as is often the case, if he desires to fit out a stable with representative animals from different breeds, he can be suited at "Shadeland" with the best of each.

- Our collection of **Trotting-Bred Roadsters** includes a large number of very promising youngsters, of the finest and most desirable trotting blood, of large size and perfect conformation, combining style, elegance, endurance and speed.
- Our **Coachers** are of good color, large size, finely formed, and have good action, and are well calculated to produce horses for which there is so great a demand and so few offered for sale.
- Our **Shetlands** are direct from the Shetland Islands, and are the finest and choicest to be found.
- Our herd of **Holstein Cattle** is large and fine, and stands unrivalled in individual excellence and deep milking qualities, having made the highest records considering ages, yet produced.
- The "Shadeland" Herd of **Devons** has no superior anywhere, each animal being a model of the perfect family cow for which the breed is noted.

Summary of Advantages Offered to Customers at "Shadeland:"

Many years' experience in importing and breeding; immense collections; variety of breeds, enabling comparison of merits; the best of everything; a world-wide reputation for fair and honorable dealing, close proximity to all the great through railroad lines; low prices, consequent upon the extent of the business, low rates of transportation, and general facilities, which are unsurpassed. In all our collections we aim to combine

HIGH QUALITY, CHOICE BREEDING, HARDINESS AND VITALITY.

As an evidence of the superiority of our stock, we will say that wherever horses that were imported by or bred at this establishment, whether **Clydesdale, Percheron-Norman, or English Draft**, were exhibited, both at State and Local Fairs, they were either victorious or compared favorably with those from all other establishments with which they came in competition. We believe that more horses bred at this establishment made records the past year below 2:30 than were made by horses bred and raised at any other one establishment in America. Our **HOLSTEINS** have also proved themselves superior. One of our heifers, when only about 25 months old, made the largest daily and monthly record, according to her age, of any animal in the world.

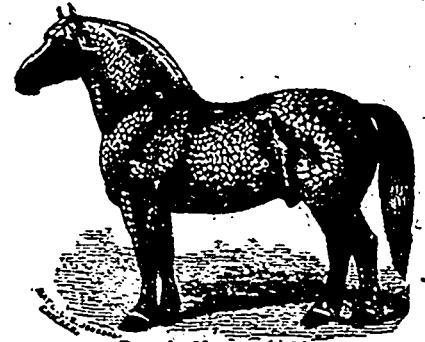
- Visitors Welcome.
- Circulars Free.
- Correspondence Solicited.

POWELL BROTHERS,
 Springboro', Crawford Co., Pa.

When you write, say you saw this advertisement in THE CANADIAN LIVE-STOCK JOURNAL. 12-3

A. C. BELL,
 Cold Spring Farm, New Glasgow, N. S.
 IMPORTER AND BREEDER OF
Clydesdale Horses,
 Shorthorn Cattle,
BERKSHIRE PIGS,
 Light Brahma and Plymouth Rock Fowls
 and Pekin Ducks.

ISLAND HOME
Stock Farm,
 Grosse Ile, Wayne Co., Mich.,
 SAVAGE & FARNUM, PROPRIETORS.



Patrice, No. 5620 (1167)

—IMPORTED—

PERCHERON HORSES

All stock selected from the get of sires and dams of established reputation and registered in the French and American stud books.

ISLAND HOME

is beautifully situated at the head of Grosse Ile in the Detroit River ten miles below the City, and is accessible by railroad and steamboat. Visitors not familiar with the location may call at city office, 52 Campan Building, and an escort will accompany them to the farm. Send for catalogue, free by mail. Address, SAVAGE & FARNUM, Detroit, Mich. 16-41

FOR SALE.



CLYDESDALES.—2 stallions, rising 3 years, imported; 1 stallion, rising 2 years, imported; 1 filly, rising 2 years, imported; 2 fillies, rising 3 years, imported; 2 fillies, rising 3 years, Canadian bred, four crosses; 11 fillies, rising 2 years, Canadian bred, three to five crosses. Several of them prize-winners.

SHROPSHIRE SHEEP.—14 imported ewes, two and three years old; 12 ewe lambs, 1 ram, 2 shears, 3 rams, 1 shear, 9 ram lambs. All the rams and ewe lambs are choice, and from imported stock.

H. H. HURD, Oakwood Farm, Hamilton, Ont.

THE LIVE STOCK JOURNAL
 FANCIER'S GAZETTE.

WEEKLY, ILLUSTRATED, PRICE 4D.
 The Largest, and acknowledged to be the Best, English Live Stock Paper.
 The Recognised Organ of the leading English Agricultural Societies, and all British Breeds of Live Stock.
 Foreign Stock-owners will find it a valuable acquisition.
 TERMS:—12 Months, 10 Foreign Countries, 22s. 6d. (\$5.50)
 VINTON & CO., Lim., 30, Holborn Road, London, N. W.

SEEDS EVERYTHING for the FARM & GARDEN
 Our new Catalogue for 1885 mailed free to all who apply.
 A choice selection of SEEDS, SEED GRAIN,
 SMALL FRUITS, &C. Send for ours. Address
 PEARCE, WELD, & CO., LONDON, ONT.

BRUCE'S
 FRESH AND GENUINE
SEEDS
 FOR THE
FARM, VEGETABLE & FLOWER GARDEN
 Have been used by the Canadian public for thirty-four years, and we claim that they are unrivalled for
PURITY, VITALITY AND GENERAL EXCELLENCE.
 Our Descriptive Priced Catalogue, beautifully illustrated, containing much useful information, is now published, and will be mailed FREE to all intending purchasers,
JOHN A. BRUCE & CO.,
 Hamilton, Canada. 16-71

SEEDS
RENNIE'S SEEDS ARE THE BEST
 Illustrated Catalogue for 1885
 Containing description and prices of the choicest
FIELD, GARDEN & FLOWER SEEDS
 Mailed free. Every Farmer and Gardener should
 have a copy before ordering seeds for the coming
 season. Handsome catalogue published in Canada
WM. RENNIE, TORONTO