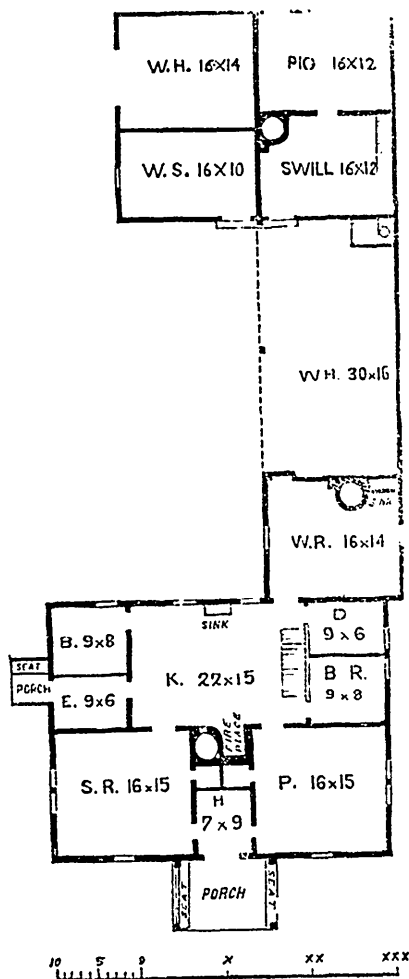
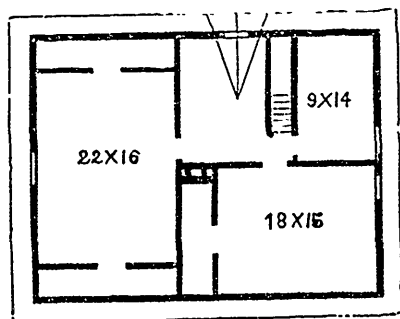


snug bedroom 9×8 feet, lighted by a window in rear; and adjoining this is a side entry leading from the end door, 9×6 feet in area; thus making every room in the house accessible at once from the kitchen, and giving the greatest possible convenience in both living and house-work.



GROUND PLAN.



CHAMBER PLAN.

The roof story is partitioned into convenient-sized bedrooms; the ceiling running down the pitch of the roof to within two feet of the floor, unless they are cut short by inner partitions, as they are in the largest chamber, to give closets. The open area in the centre, at the head of the stairs, is lighted by a small gable window inserted in the roof, at the rear, and serves as a lumber room; or, if necessary, a bed may occupy a part of it.

In rear of the main dwelling is a building 44×16 feet, occupied as a wash-room and wood-house. The wash-room floor is let down eight inches below the kitchen, and is 16×14 feet, in area, lighted by a window on each side, with a chimney, in which is set a boiler, and fireplace, if desired, and a sink in the corner adjoining.—This room is $7\frac{1}{2}$ feet in height. A door passes from this wash-room into the wood-house, which is 30×16 feet, open in front, with a water-closet in the further corner.

The cellar is $7\frac{1}{2}$ feet in height—and is the whole size of the house, laid with good stone wall, in lime mortar, with a flight of steps leading outside, in rear of the kitchen, and two or more sash-light windows at the ends. If not a loose, gravelly, or sandy soil, the cellar should be kept dry by a drain leading out on to lower ground.

The building beyond, and adjoining the wood-house, contains a swill-house 16×12 feet, with a window in one end; a chimney and boiler in one corner, for swill barrels, grain, meal, potatoes, &c., for feeding the pigs, which are in the adjoining pen of the same size, with feeding trough, place for feeding, &c., and having a window in one end and a door in the rear, leading to a yard.

Adjoining these, in front, is a workshop and tool-house, 16×10 feet, with a window at the end, and an entrance door near the wood house. In this is a joiner's work-bench, a chest of working tools, such as saw, hammer, augers, &c., &c., necessary for repairing implements, doing little rough jobs, or other wood work, &c., which every farmer ought to do for himself; and also storing his hoes, axes, shovels, hammers, and other small farm implements. In this room he will find abundant rainy-day employment in repairing his utensils of various kinds, making his beehives, hencecoops, &c., &c. Next to this is the wagon-house, 16×14 feet, with broad doors at the end, and harness pegs around the walls.

The posts of this building are 10 feet high; the rooms eight feet high, and a low chamber overhead for storing lumber, grain, and other articles, as may be required. Altogether, these several apartments make a very complete and desirable accommodation to a man with the property and occupation for which it is intended.

On one side and adjoining the house, should be the garden, the clothes-yard, and the bee-house, which last should always stand in full sight, and facing the most frequented room—say the kitchen—that they can be seen daily during the swarming season, as those performing household duties may keep them in view.

By sympathy we make others' miseries our own: and so by relieving them, we at the same time relieve our ourselves also.