



**Canada's  
Double Track  
Line**

**HOMESEEKERS' EXCURSIONS**

**WESTERN CANADA  
Via Chicago**

April 2nd, 16th and 30th and every second Tuesday thereafter until Sept. 17th, inclusive.

**Winnipeg and return \$34.00  
Edmonton and return 42.00**

Tickets good for 60 days. Proportionate rates to other points in Manitoba, Saskatchewan and Alberta. Tickets will also be on sale on certain dates via Sarnia and Northern Navigation Company.

**Low Rates to Pacific Coast**  
Tickets on sale daily until April 15th.

**Settlers' One-Way Tickets**  
To Manitoba, Saskatchewan and Alberta, on sale every Tuesday in March and April.

Full particulars and tickets from any Grand Trunk Agent, or write A. E. Duff, District Passenger Agent, Toronto, Ont.

**CANADIAN  
PACIFIC  
HOMESEEKERS'  
EXCURSIONS**

**TO  
Manitoba, Saskatchewan, Alberta**

Special Trains leave Toronto 2.00 p.m. on  
APRIL 2, 10, 20 MAY 14, 20 JUNE 11, 20  
JULY 9, 23 AUG. 6, 20 SEPT. 3, 17

Second class tickets from Ontario stations to principal Northwest points at

**LOW ROUND-TRIP RATES**  
Winnipeg and return \$34.00; Edmonton and return \$42.00, and to other points in proportion. Tickets good to return within 60 days from going date.

**TOURIST SLEEPING CARS**  
through to Edmonton via Saskatoon, also to Winnipeg and Calgary via Main Line on all excursions. Comfortable berths, fully equipped with bedding, can be secured at moderate rates through local agent.

Early application must be made.  
**ASK FOR HOMESEEKERS' PAMPHLET** containing rates and full information.

Apply to nearest C.P.R. Agent or  
**M. G. MURPHY, Dist. Pas. Agt., Toronto.**

**ONLY DIRECT LINE NO CHANGE OF CARS**

**You Need This  
Light 'Most  
Every Night**

Indoors—outdoors—in the  
stables and driving shed  
—hundreds of times—in  
dozens of places—you  
need the

**"NINE LIVES"  
ELECTRIC  
FLASHLIGHT**

with its bright but  
economical little Tung-  
sten incandescent lamp.  
Compact, handy, and  
safe! Easily carried  
in your pocket or under  
your arm. Simply  
press the button and  
you have instantaneous  
flash. Can't set fire to  
anything.

We'll send you a "Nine Lives"  
Electric Flashlight, fully prepaid.  
Pocket type for \$1.50. Tubular  
type for \$2.00. It's too conven-  
ient to be without—write to-day.

**CANADIAN CARBON CO., Limited**  
96 King St. West . . . . . Toronto  
AGENTS AND DEALERS WANTED

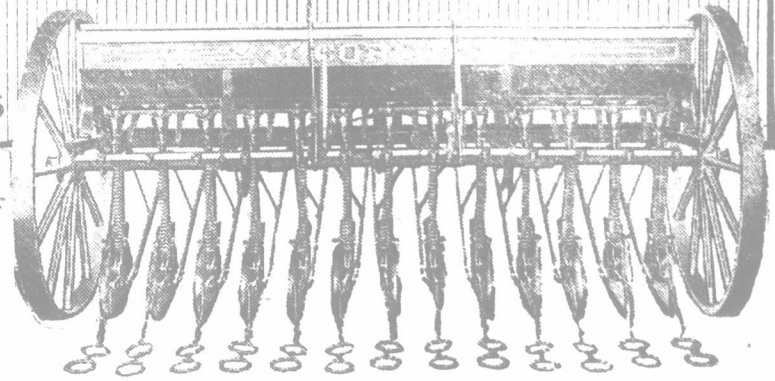
**MOVE TO CHILLIWACK  
BRITISH COLUMBIA**

On the Sunny Pacific slope, where the winter lasts  
only a month, and where the farmer receives larger  
return on his investment than anywhere else in  
Canada. Write for free illustrated booklet.

Board of Trade, Chilliwack, B. C.

Publication "FARMER'S ADVOCATE."

**McCormick Drills**  
Sow at Correct Depth  
and Are Easy on Horses



**W**ITH this light draft McCormick Drill you can plant peas, beans, corn or any other large seed, and wheat, oats, barley, and other small grains, with equal facility—without cracking or breaking any of the seed—because of the construction of the double-run force feed.

McCormick Drills have disk bearings as near dust-proof as disk bearings can be made. Here's why; The oil runs from the inside towards the outside, and the constant supply tends to force out grit or dirt. The oil cups are large and convenient.

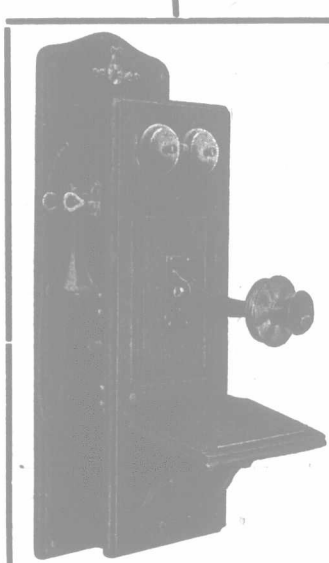
Let the McCormick agent in your town tell you all the facts, or, write to nearest branch house below for any special information you desire.

Eastern Branch Houses

**International Harvester Company of America**

(Incorporated)

Hamilton, Ont.; London, Ont.; Montreal, Que.; Quebec, Que.; Ottawa, Ont.; St. John, N. B.



**No. 65 Magneto  
Telephones**

This is our standard rural line instrument, of which there are at present several thousand in use in Canada, some of which have been in service more than six years.

You will make no mistake in equipping your lines with CENTURY telephones.

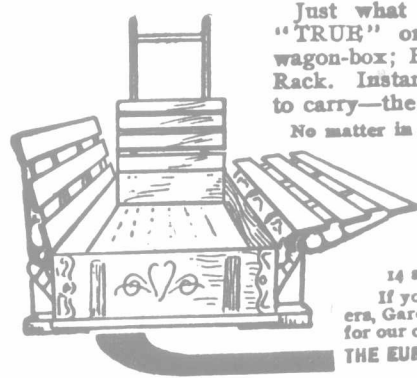
Remember, we will send two instruments on 60 days' trial and prepay the freight, you can't lose on this proposition.

Our prices are right and deliveries prompt.

Your request will bring catalogue and quotations.

**Century Telephone Construction Co.**  
Buffalo, N. Y. Bridgeburg, Ont.

**"TRUE" COMBINATION  
WAGON BOX  
AND RACK**



Just what every farmer needs. With the "TRUE" on his wagon he has a first-class wagon-box; Hay, Stock, Corn, Wood or Poultry Rack. Instantly adjusted for any load you want to carry—the only tools you need are your hands.

No matter in what position you put the wings, it is impossible for them to get out of that position, but it would take you but an instant to change them.

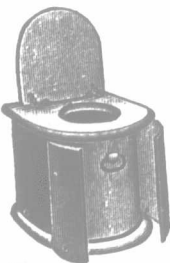
We guarantee this article to be made of nothing but the best of material—Yellow Pine, Hardwood and Malleable Iron—and to carry two tons in any position. Made in 14 and 16-ft. lengths and 38, 40 and 42-inch widths.

If you need anything in the line of Planters, Seeders, Garden Drills and Cultivators, Sprayers, etc., write for our catalogue. We have dealers in your town.

**THE EUREKA PLANTER CO., Limited - Woodstock, Ont.**

**Red Cross Chemical Closets**

No Water Required or expensive plumbing.  
Easily Installed anywhere in your home.  
Inexpensive to Operate and Positively Guaranteed.  
Odorless and Sanitary.  
Write for catalogue E.



**Red Cross Sanitary Appliance Company**  
(Inventors and Sole Manufacturers), GRIMSBY, ONT.

**"Good as Gold"**

ARE THE  
**POLICIES**  
OF THE

**London Life  
Insurance Company**

Head Office:  
LONDON, CANADA

BECAUSE:

The Company has a long-established reputation for prompt payment of claims upon presentation of completed proof.

Policies are free from technicalities likely to lead to delay in settlement.

Policies can be cashed for exceptionally large values on account of the very high guarantees contained therein.

ASK FOR PAMPHLET

"Endowment at Life Rate"

**Save \$50 to \$500**

per year with the aid of a reliable gasoline engine. Others are doing it why not you? Farm help is scarce—wages high. The gasoline engine on the farm is the greatest labor and money saver of the day. The investment is small—they do their work quickly and at little cost.

**GRAY HIGH-GRADE FARM ENGINES**

Built especially for years of hard, daily farm work. Very simple construction—few moving parts—no complications. Costs very little for fuel. Shipped complete—wired up and ready to run. Correct design, high grade material and workmanship and absolutely guaranteed.

**BIG POWER GUARANTEED**

The Big power actually delivered is the strong point in Gray Farm Engines. Power is what you pay for when buying a gasoline engine. Remember this point—see that you get the power. In all Gray engines the power is absolutely guaranteed. You run no risks.

**GET OUR BIG ENGINE CATALOG**

Our big illustrated farm engine catalog contains valuable information about gasoline engines—their design, construction, care and operation. You'll find it a great help in making the right selection. Write for it today. Ask us questions—get the benefit of our years of experience.

**30 Days' Trial** at your own work will prove the value of a Gray Engine to you. Give it hard work to do every day—test it out thoroughly and if not satisfied we take the engine back and pay the freight. No strings to this offer—no red tape—no obligations.

**GRAY MOTOR COMPANY**  
4335 U. S. Motors Building, Detroit, Michigan