

Issued Each Week Only One Dollar a Year

VOL. XXIX.

NUMBER 36

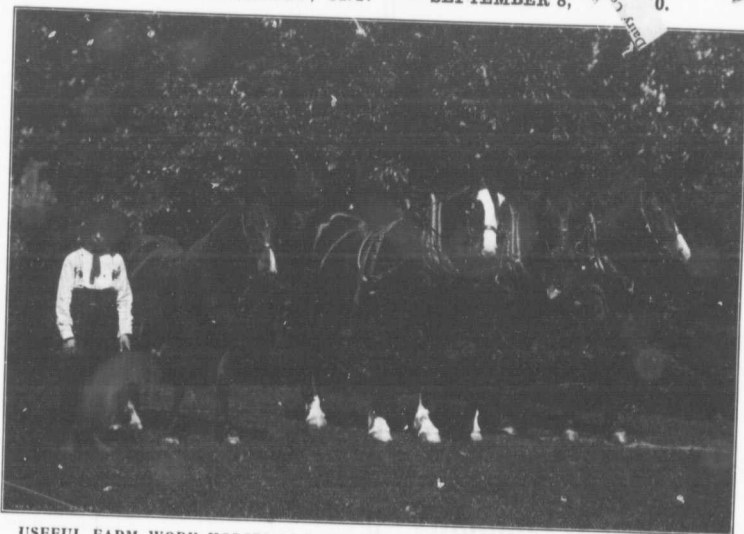
# FARM AND DAIRY

## RURAL HOME

PETERBORO, ONT.

SEPTEMBER 8,

1900.



### USEFUL FARM WORK HORSES BUT NOT THE MOST PROFITABLE SORT TO BREED

General purpose horses such as the ones illustrated are quite generally popular and quite satisfactory for farm work. This sort can always be purchased at reasonable prices and in view of the fact, it is most profitable to buy that kind rather than to raise them. Good heavy drafters can be raised on almost the same feed and no matter at what age they are to be marketed, they will command prices much in advance of general purpose horses. The illustration shows some of the work horses on the farm of Mr. J. Locke, Northumberland Co., Ont., whose farm was one of the successful competitors in the Dairy Farms Competition.

DEVOTED TO  
**BETTER FARMING AND**  
CANADIAN COUNTRY LIFE