

Europe—Slavs and Doukabors, ignorant, unprogressive and fanatical. He vividly portrays "the danger, if not the criminality, of allowing such people to come into the country." "There is a duty which we owe to those coming after us, to transmit to them a heritage free from the contaminating influence of an alien race, with whom we have nothing in common, and which may neither amalgamate nor die out." "Instead of expending our strength to secure quantity, we should look very carefully after the *quality* of those coming to us."

Another important element in the building up of a Canadian nationality is the reformation of degenerates and the proper care of incorrigibles. The excellent work done by our present charitable institutions is acknowledged, but very much more remains to be done. Almost no provision is made for the feeble minded, though they are considerable in numbers, and their condition is often most pitiable. Many of them might be made self-supporting, as in Massachusetts. Poverty, ignorance and intemperance produce a class of criminals dangerous to society and a serious burden upon its resources. The history of the "Jukes" family is a most striking illustration. Our laws dealing with criminals are still a disgrace to civilization. "We have one cure for all sorts and conditions of crime" and criminals, "so many months or years of imprisonment, according to the crime committed, without any consideration of the effect upon the individual. What we need is an institution to which young persons with criminal tendencies can be sent, and where they will receive a careful physical, mental and moral training, and a sufficient insight into some handicraft by which they may be able to earn a living, and where they shall remain "until experts say they are fit to take their places in society again." "Crime is a disease and should be treated as such." "Incurables should be carefully guarded and never allowed at large." In the admirable prison at Elmira it has been proved conclusively that a large proportion of criminals can be permanently cured. Such curative measures should be adopted in this country before the proportion of criminals increases and becomes a serious burden to the state, as the conditions of life become more stringent.

"In this young country we have no classes among our people, nor vested rights of great antiquity to clog the wheels of progress as in older lands." With the introduction of only desirable immigrants and the turning of incipient criminals into useful citizens we may hope to take rank among the foremost nations of the world.

## CARDBOARD WORK.

T. B. KIDNER.

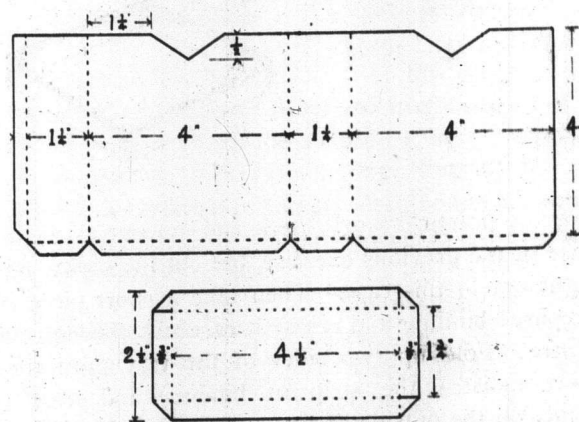
(All rights reserved.)

### EXERCISE 6. An Envelope Case.

This model is in two parts, and the development of each should be drawn.

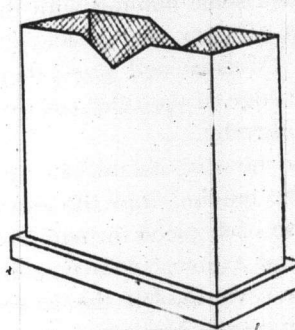
In the practical work the upper portion calls for no particular mention, as it is similar in principle to the previous exercises. Some care will be needed

Ex 6. An Envelope Case



in cutting out the triangular pieces, and the pupils must be warned against cutting too far. The best way is to press the point of the knife firmly into the cardboard at the inner angle and then to cut outwards to the edge of the cardboard.

The base illustrates another method of joining angles, the glue flaps being triangular pieces. In making the base, first cut out an oblong  $5\frac{1}{4}$  by  $2\frac{1}{2}$  inches. Then mark off the side pieces and carefully "half-cut" right along each line. The corners can then be cut off and the triangular pieces severed along one edge, so that they may be turned up underneath and glued to support the sides.



Ex 6. Perspective view.

Glue the base up first, and while that is setting the upper portion can be folded and glued on the long edge *a*. When this joint is set, glue the four remaining flaps and press into position on the base.

Sometimes an agreeable effect is obtained by making the base of different colored card from the upper portion.