

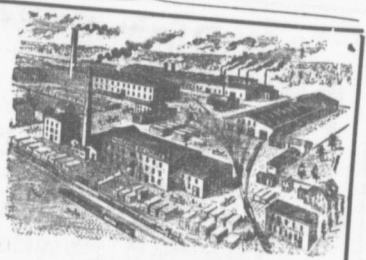


**"FENERTY" SHOVELS**  
 -FOR-  
 Miners, Contractors and Heavy Work.  
**"GILMOUR" SHOVELS**  
 -FOR-  
 General Purposes,  
 MANUFACTURED BY  
**The HALIFAX SHOVEL CO**  
 HALIFAX, N. S.  
 ALL GOODS GUARANTEED.  
 SPECIAL SIZES and SHAPES MADE TO ORDER.

**Genuine Garlock Packings**  
 FOR ALL PURPOSES.  
**Pipe and Boiler Coverings,**  
**ENGINEERS SUPPLIES.**

also  
**"Tauril" High Pressure Jointing**  
 'the Best Sheet Packing yet  
 Produced.  
**THE GARLOCK PACKING CO.**  
 HAMILTON, ONTARIO.

Used by Collieries in Lancashire, Staffordshire & Yorkshire  
**X TERRA**  
 For Marsant, Mussels Deflector or Cleand Lamp  
 COLLIERY LAMP OIL.  
 PURE WHITE FLAME LOW PRICE  
**E. WOLASTON, Dutton St MANCHESTER**  
 Sole Representatives for Canada, **AUSTEN BROS.,**  
 Halifax, N. S.



-MANUFACTURERS OF-  
**RAILWAY STREET and MINING CARS,**  
 Church Pews, Fittings for Stores, Schools, &c  
**A SPECIALTY**  
 Large Stocks of Foreign and Domestic Lumber on Sale.  
**Rhodes, BUILDING MATERIALS GENERAL**  
**Curry & Co., Ltd.**  
 Branch ROBBIE STREET, HALIFAX, N. S. AMHERST, N. S.

**INTERCOLONIAL RAILWAY**  
 On and after SUNDAY, JAN. 10th 1909 trains run daily, (Sunday excepted,) as follows :-

-TRAINS LEAVE STELLARTON-

No 144 Mixed for Hopewell	5.55
No 79 Mixed for Trenton	6.30
18 Express for Halifax, and St. John's	7.00
21 Mixed for Pictou Landing	7.40
62 Mixed for Pictou	7.45
22 Mixed for Mulgrave	8.30
19 Express for Sydney	11.10
26 Mixed for Pictou	11.15
180 Mixed for Truro	11.15
20 Express for New Glasgow	12.55
140 Mixed for Halifax and Montreal	13.10
101 Mixed for Pictou Landing	13.15
22 Mixed for New Glasgow	13.30
65 Mixed for Hiramswell	13.45
17 Express for New Glasgow	13.10
66 Express for Pictou	21.50
	21.55

-TRAINS ARRIVE AT STELLARTON

79 Mixed from Hopewell	6.30
79 Mixed from Trenton	7.00
18 Express from New Glasgow	7.30
21 Mixed from Hopewell	7.35
50 Mixed from Truro	8.00
20 Express from New Glasgow	10.45
27 Mixed from Pictou	10.45
50 Mixed from Mulgrave	10.45
12 Express from Halifax and St. John's	12.35
130 Mixed from Pictou	12.35
30 Express from Sydney	13.00
21 Mixed from Pictou Landing	13.20
77 Mixed from Hopewell	13.45
62 Mixed from Pictou	13.45
66 Express from New Glasgow	13.45
17 Express from St. John's and Halifax	21.45
	21.48

All trains are run by Atlantic Standard time Twenty-four hour notation. Twenty-four o'clock is midnight. Moncton, N. B., Dec. Stat. 1908.  
 Sleeping and Dining Cars between Halifax and Sydney, on Nos. 19 and 20 trains