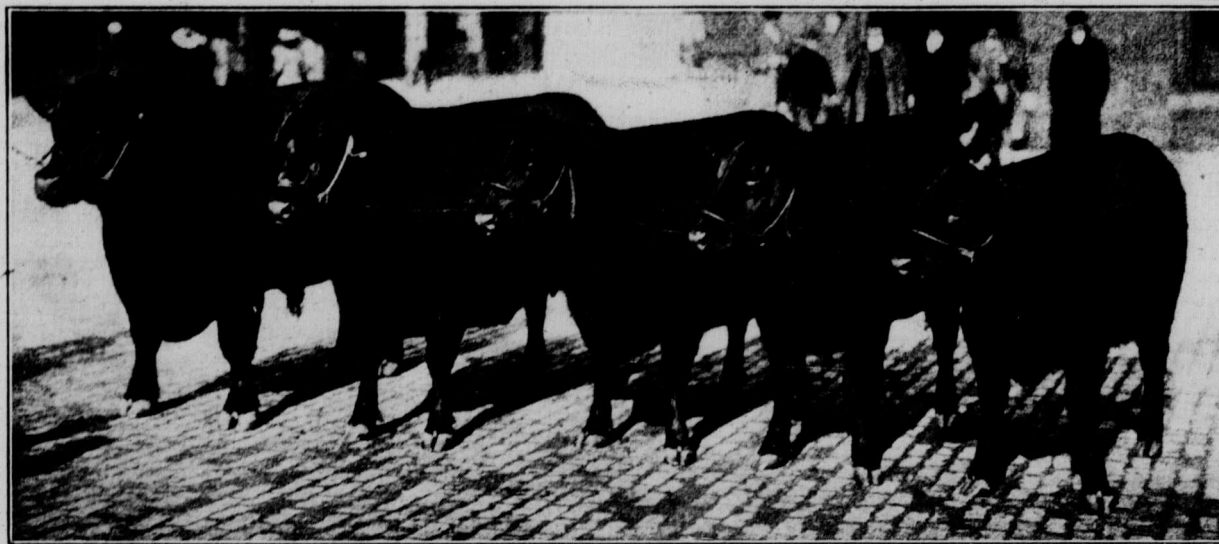


Glencarnock Stock Farms

Home of America's Champion Aberdeen-Angus Herd
To Raise Champions, Plant the Seed of Champions.



Champion Herd at Chicago, headed by LeRoy III of Meadowbrook

ABERDEEN ANGUS CATTLE

We have for immediate sale a number of bulls and heifers of breeding ages from selected stock. At the International Livestock Show at Chicago, in 1912-13, the Glencarnock Stock Farm furnished the Grand Champion steer of the two shows in competition with champions of all the pure bred and grade classes. We have also a number of nice yearling heifers to offer.



Berkshire and Yorkshire Swine

We can supply you with singles, pairs or trios, not akin, sired by boars noted for their individuality and out of sows which have scale, smoothness and quality. **SUFFOLK DOWN SHEEP**—the Great Mutton Breed of England. We are offering rams and ewes, and have also a limited number of ram lambs and ewes for sale. **SEND FOR OUR NEW 1915 CATALOGUE**, which is now ready for mailing. Orders filled for any number of animals of any of the above named breeds, all ages, both sexes.



Jas. D. McGregor

ROBERT BROWN
Herdsmen

Brandon, Man.

Strathmore Farm Berkshires

We began breeding English Berkshires because we wanted a hog of good size, uniformly strong in constitution, early maturing, black in color, prolific, and of a type that would produce the bacon that commands the highest price in home and foreign markets. We have continued to breed English Berkshires because we find they fill every one of the above mentioned requirements. They are large hogs, but free from coarseness. They are strong and rugged; the breeding sows on this farm are never in pens except for a few days at farrowing time. They are early maturing; we have had Berkshires making 225 pounds at six months. They are black and not subject to sun-scald and accompanying skin disorders. They are prolific; the sows on this farm raised an average of 8 pigs each at last spring's farrowing—a fair average for a herd of thirty, half of which were farrowing for the first time. The English Berkshires are the bacon breed; their smooth shoulders, trim hams, and square-turned ribs are the best evidence of that.

The breeding stock on this farm is outstanding in these respects: It is uniform in type and true in form to the approved standard of the breed; it has been selected with the first consideration — the maintenance of constitutional vigor, size, strength of bone, and all round smoothness. From stock of this type we sold in the spring and summer as many as we cared to offer of last spring's litters. They were shipped as far East as Winnipeg and as far West as Vancouver Island. Not one complaint has been received from buyers. The reason is simply this: We do not ship pigs that we would not be satisfied to keep in our own breeding herd, and we furnish pedigrees just as quickly as the papers can be got through the Records Office.

At present we have a few sows and boars for sale that we are willing to say are right. They are four and five months old. The price on them is very reasonable. Anyone desirous of buying some stock with which to start a herd or in want of a boar to improve the present herd may, by writing, have all the additional information we can give them concerning these Berkshire pigs.

Canadian Pacific Railway Supply Farm
Strathmore - - Alberta



When

The Fruit is from Ontario The Quality is there

Ontario's Apples, Pears, Peaches and Small Fruits are unexcelled. Buy *Made in Canada* goods for your home. Take a basket of Ontario Grapes or Peaches or a box of Apples to your children or your mother. The quality is there when the fruit is from Ontario.

For further information write to the FRUIT BRANCH.

Ontario Department of Agriculture
Toronto, Ont.



We ha
25
6
1
1
7
5
of all

We
& S
our
Wor

T
BI

SEAS
Rememb
to look af
chief fact
stock rais
"coming"
until the
posed of.
farms to
and young
way they
during th
one sees
dog appe
staring h
shows th
and roug
horses in
the best
stock. T
be fed to
tract, bu
colt shot
with hay
to it th
oats eve
other ho
first.

Henry
ance of
oats, th
one yea
from o

FO
SELE

S

Ho

SM

Cal

Ask
MC