



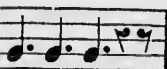
measure note is a
indicates that
s (*crotchets*), or

ne ?
triple time are
e of compound

ures $\frac{6}{8}$?
measure note is
indicates that
avers), or their



twelve eighths
s.

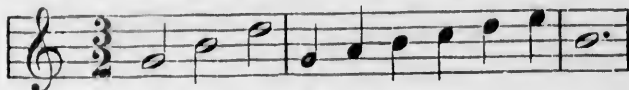


are there ?

in modern music.

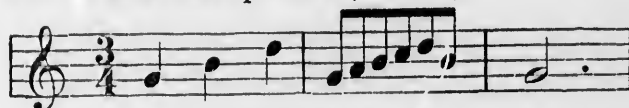
Explain the first species, $\frac{3}{2}$.

The figure 2 shows that the measure note is a half (*minim*), and the figure 3 that every measure contains three half notes (*minims*), or equivalent.



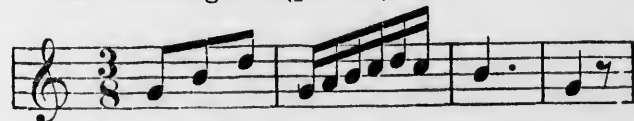
Explain the second species, $\frac{3}{4}$.

The figure 4 shows that the measure note is a quarter (*crotchet*), and the figure 3 that every measure contains three quarters (*crotchets*).



Explain the third species, $\frac{3}{8}$.

The figure 8 shows that the measure note is an eighth (*quaver*), and the figure 3 that every measure contains three eighths (*quavers*).



Q. How many species of compound triple time ?

A. Two principal, viz: $\frac{9}{8}$ and $\frac{9}{4}$; the latter is not used in modern music.

Q. What is the meaning of $\frac{9}{8}$?

A. The figures $\frac{9}{8}$ denote that each measure contains nine eighths (*quavers*), or their value in other notes.

