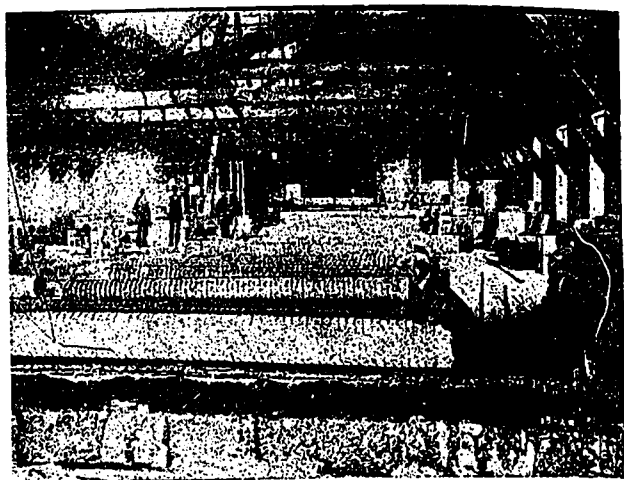


Showing Method of Wiring.



Showing Pipes Ready for Dipping.

pose is to trim the ends of the pipe; also to cut couplings. Before they are cut apart, a series of couplings have the appearance of one solid pipe, with the wire wound around for a short distance and then cut off and re-started a little further on. When completely wire-wound in this way the "pipe" is taken out of the winder, and transferred to the cut-off saw, where each section or coupling is cut apart. The factory also contains a large dipping vat wherein every

pipe and coupling is dipped in asphaltum as a preservative.

The boiler and engine house is at one end of the factory. This is an iron sheeted structure, 28x32 feet. A horizontal boiler of 120 pounds pressure is used. The dry kiln is 24x70 feet, and has a capacity of \$65,000.

The system was installed by the North Coast Dry Kiln Company of Seattle, Wash. The dry kiln is a special feature of the Dominion Company's equipment,

## B. C. Mills, Timber and Trading Company

VANCOUVER AND NEW WESTMINSTER

Manufacturers and Dealers in All Kinds of  
LUMBER, LATH, SHINGLES, MOULDINGS, SASH, DOORS,  
INTERIOR FINISH, TURNED WORK, ETC.

FISH AND FRUIT BOXES,  
LARGE STOCK PLAIN AND FANCY GOODS.  
LUMBER ALWAYS IN STOCK FOR FENCING AND DRAINING.

Royal City Branch, Columbia Street,  
Telephone 12  
New Westminster