

CHES.

The proprietors of THE CRITIC offer two prizes—to consist of books on Chess—to those subscribers who shall send in the greatest number of correct solutions during the current year. No entrance fee required. All communications for this department should be addressed— CHES EDITOR, Windsor, N. S.

TO CORRESPONDENTS.

Quebec Chronicle.—Your issue of March 22nd failed to reach us. Kindly forward.

SAMSTAG ABEND.—Es wäre uns sehr lieb, "einea Tausch zu treffen."

HAMILTON WHITE.—Your welcome letter received. Solutions correct. Will write you shortly.

F. MACKIE, (Eng).—Correct solutions of 14, 16, 17, received.

DR. E. S. CREE, H. B. STAINS.—Nos. 22 and 23 are correct.

REV. P. H. BROWN, J. W. WALLACE.—No. 23 is correct.

N. B.—No solutions are acknowledged which are posted after the publication of the printed solution in this column.

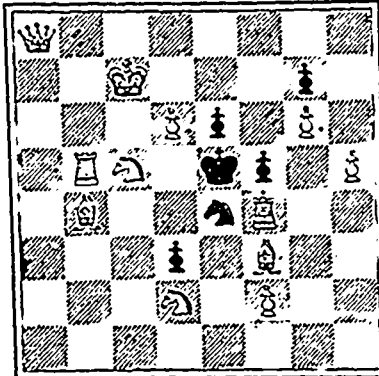
Solution to Problem 24.—R to Q5, etc.

Solution to Problem 25.—Q to QR8, etc.

(Correct solutions of 24 and 25 received from Rev. C. E. Willets, L. M. Wilkins, Dr. L. Johnstone, W. J. Calder; and of No. 25 from Dr. E. S. Creed, Rev. P. H. Brown, and C. Cutbill.)

PROBLEM No. 28.

By J. A. Graves, of Brooklyn, U. S. BLACK.



White to play and mate in 2 moves.

PAWN OPENING.

Played between Herr Meyer (White) and S. S. (Black.) This game is extraordinary, as White began by playing all his Pawns one square, and Black moved every Pawn two squares.

WHITE.

- 1 P to QR3
2 P to QK13
3 P to QB3
4 P to Q3
5 P to K3
6 P to KB3
7 P to KK13
8 P to KR3
9 P to Q4
10 P takes KP
11 P to B4
12 Kt to B3
13 P takes KtP
14 Kt to Kt5
15 B to KK12
16 Q to B2
17 Castles
18 P takes P
19 Kt to Q2
20 QKt to K4

BLACK.

- P to QR4
P to QK14
P to QB4
P to Q4
P to K4
P to KB4
P to KK14
P to KR4
P to QB5
Kt to QB3
B to K3
P to KK15
BP takes KK1P
Q to K2
R to Qsq.
Kt takes P
Kt to Q6
QP takes P
B to Q4
P to KR5

- 21 P takes P
22 Kt to Kt3
23 B takes B
24 Q to KK12
25 R to Kt5
26 RP takes P
27 P takes P
28 Q to K4 (ch)
29 Q takes P
30 QKt to K4
31 Q to B7 (ch)
32 Kt takes B (ch)
33 R to Qsq.
34 Q to K6 (ch)
35 B to R3
R takes P
Q to B3
K takes B
R to Qsq.
P to Kt5
P takes P
B takes P
Kt to K2
B to B4
Q to B3
K to Q2
Q takes Kt
K to B3
K to B2
Resigns.

(Boys' Own Paper.)

We have received from Messrs. R. Clarke and Co., of Cincinnati, U. S., a copy of their "American Edition of Cook's Synopsis of the Chess Openings." This is undoubtedly a work which every member of a Chess club should possess. In addition to Cook's Synopsis, (regarded in England as the standard work on the Openings) which is here reprinted in extenso, there is a valuable supplement by Mr. J. W. Miller, (of the Cincinnati Commercial Gazette) containing a number of American inventions in the Chess Openings, together with first analyses discovered since 1682. At the end is a useful list of the Chess club and Chess columns in the United States and Canada. The work is thoroughly brought up to date, analyses being given of such openings as the Blackmar, Fyfe, and Jerome Gambits, the Meadow Hay, Stonewall, etc. In short we can confidently recommend the book to our readers as a standard work for reference. It may be procured direct from the publishers, free by mail for \$2.

DRAUGHTS-CHECKERS

The proprietors of THE CRITIC offer two prizes—to consist of books on Checkers—to those subscribers who shall send in the greatest number of correct solutions during the current year. No entrance fee required.

All Checker communications should be addressed to W. Forsyth, 36 Grafton Street, Halifax.

TO CORRESPONDENTS.

F. MACKIE, Retford, E.—Your card giving correct solution of Problem 10 is received.

T. B. L.—Thanks for your suggestions, but do not see the way clear to organize a checker tournament this summer. While we have a number of good players in this city and vicinity, they are not sufficiently enthusiastic to undertake the responsibility and expense that would be entailed. Your end game is very good, and you will find it below. Would be pleased to look over the positions in the Scottish American that you mention as having given up. Please reconsider No. 11. Your solution is faulty. Second solution better, but not complete.

FRANK FORSHAY.—Your solution of Problem 11 is unsound. Please try again.

SIMON D. FRASER, Charlottetown.—Your solution of No. 19 is correct. The other line to which you allude is the stronger one, and should have been given by you to make the solution complete. Will write soon.

"W." Halifax, "Mc." Maitland, and Hugh McDonald, Th orburn, No. 11 not complete. Try again.

SOLUTIONS.

PROBLEM 19.—Simon D. Fraser, of Charlottetown, P. E. I., has sent the only solution to this problem which has reached us. The position is as follows:—black man—7, k, 21; white ks, 18, 29. White to move and win.

- 18 15 9-6 14 9 1-5
21-17 17 14 1-5 2 5
29 25 6-1 9 6 10-14
17-13 15 19(a)* 5-1 26 22
25 21 1-6 6 2 5-1
13-9 19 23(b)* 7-10 6-10
21 17 6-1(1) 23. 26(c)* w. wins

(1) Instead of 6-1 move as below:

- 6-10 (2) 15-11 10-14 17-22
14 9 6 2 8 10 23 19
10-15 7-10 14-17
9 6 2 6 10 14 w. wins.

(2) Instead of 15-11 move as follows:—

- 7-11 (3) 15-10 10-7 7-3
6 9 23 19 9 14 14-10

(3) Instead of 15-10 move as follows:—

- 11-16 *27 23 28-32 27 32
9 6 24-28 18 23 28-24
15-19 10 15 32-28 32 28
23 27 28-24 23 27
16-20 23 19 28 32
6 10 24-28 19 23
19-24 15 18 32-28 w. wins.

(a) If 14 9 is moved, black draws by 7-10.

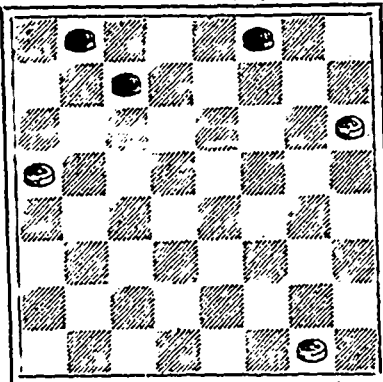
(b) If 19 16 is moved, black draws by 6-2.

(c) If 23 18 is moved, black draws by 1-5.

* Only moves to win.

PROBLEM 21.

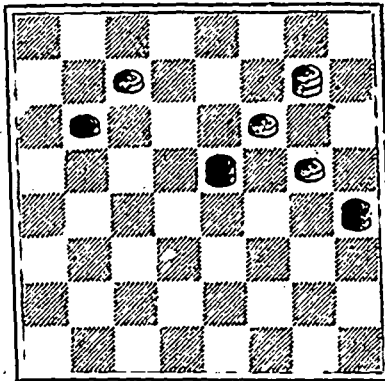
Selected. Black men—1, 3, 6.



White men—12, 13, 32. Black to move and win.

PROBLEM No. 22.

End Game by T. B. L., Shubenacadie. Black—9, ks., 15, 20.



White—6, 11, 16, k., 8. Black to move and draw.

Blank forms, (suitable for both Chess and Checkers), for copying down problems, positions, endings, etc. Fifty for 25c., post free. Small sheets, numbered, and with appropriate headings, for recording games. Twenty-five for 15c. For sale at CRITIC Office, Halifax.

NOTICE.

Now ready for inspection at De Wolfe's Show Rooms, The largest assortment of CARRIAGES

Yet offered. A FEW of those SEVENTY-FIVE DOLLAR ones left.

CALL AND SEE AT De Wolfe's Carriage Factory, NORTH WEST COMMON, HALIFAX.

MONTREAL, 172 DALHOUSIE ST. TORONTO, 263 TO 271 KING ST. WINNIPEG, BALTIMORE, 220 SOUTH HOWARD ST. 11 McWILLIAM ST. E.

Maritime Lead & Saw Works

JAMES ROBERTSON,

Iron, Steel and General Metal Merchant and Manufacturer,

Robertson's New Building, Cor. Mill and Union Streets, Works and Iron Yard—Cor. Sheffield and Charles Streets,

ST. JOHN, N. B.

NATIONAL COLONIZATION LOTTERY

Under the Patronage of Rev. Father Labelle Established in 1884, under the Act of Quebec, 32 Vict. Chap 30, for the Benefit of the Diocesan Societies of Colonization of the Province of Quebec.

CLASS D.

The Tenth Monthly Drawing will take place On WEDNESDAY, 21st March, 1888.

At 2 o'clock, p.m.

PRIZES VALUE, \$60,000.

PRIZES VALUE \$50,000.00 Principal Lot—1 Real Estate worth \$5,000.00

LIST OF PRIZES.

- 1 Real Estate worth \$5,000 \$5,000
1 Real Estate worth 2,000 2,000
15 Building Lots in Montreal 300 3,000
Suites to do 200 2,000
20 do do 100 2,000
100 Gold Watches 50 5,000
1000 Silver Watches 20 20,000
1000 do do 10 10,000

2147 lots worth \$50,000

TICKETS \$1.00.

SECOND SERIES.

PRIZES VALUE \$10,000.00 Principal Lot—1 Real Estate worth \$1,000.00

LIST OF PRIZES.

- 1 Real Estate worth \$1,000 1,000
100 Gold Chains worth 40 4,000
1000 Toilet Sets worth 5 5,000

1101 lots worth \$10,000

TICKETS 25 Cents.

Offers are made to all winners to pay the prize cash; less a commission of 10 per cent. Winners' names not published unless specially authorized.

S. E. LEFEBVRE, Secretary, 19 ST. JAMES STREET, MONTREAL

PROTECTION

We must have, because if not protected from the cold, chilly winds of January, the system is liable to a constitutional change, and the lungs become weakened and diseased, then wear a

"Pine Balsam" Protector.

Filled with Fir Balsam, of great benefit to any one with a lung trouble, by giving off its healing properties to the lungs, both by absorption and inhalation. These Protectors, along with Chamberlain's, Polar Jackets, Elder Down Jackets, and the French Flannel Jacket. But why circulate for them than to state that there is a full line of Protectors in stock at the LONDON DRUG STORE 147 Hollis Street,

J. GODFREY SMITH,

Dispensing Chemist, Proprietor-Agent for LAURENCE'S Axis-Cut Pebble Spectacles & Eye-Glasses

Printed by Halifax Printing Co. 161 Hollis Street, Halifax, N. S.