

- 45,221 Stanley Cooper Peucker, Toronto, Ont., apparatus for refining acetic acid, also, 45,222 for concentrating or vaporising sulphuric and acetic acid, and apparatus therefor
 45,223 William Adams, Broken Hill New South Wales, compound for and manufacture of high explosives.
 45,224 Alfred William Palmer, New York, means for making borings at the bottom of deep waters and in tide ways.
 45,225 Anthony Reckenzaum, London, England, electric meter.
 45,227 Daniel K. Slawson, Manitoba, Man., car coupling.
 45,228 Charles Carter, Ipabah, stamp mill and amalgamator.
 45,234 Clinton M. Ball, Troy, N.Y., ore separator.
 45,237 Wm. Henry Kirby, Vancouver, B.C., adjustable clamp tire tightener.
 45,242 Henry Hagelstein, San Angelo, Texas, hoisting device.
 45,244 James Wright, Montreal, P.Q., stroke reducer for engine.
 45,250 John J. Bordman, Brooklyn, N.Y., pulverizing machine.
 45,252 Frederick Egge, Bridgeport, Connecticut, machine for making cable chains.
 45,253 A. Bertzell Ireland, Greene, N.Y., machine for making shingles.
 45,257 Orville Ruselle Sacket, Niagara Falls, N.Y., coupling for fire hose.
 45,260 David G. Cross, Berlin, Ont., car-coupler.
 45,264 Lafayette D. Railsbach, Indianapolis, Ind., rotary plough.
 45,268 Julius Begtrup, Ridgeway, Pennsylvania, governor for steam engine.
 45,270 Wm. J. Butler, Woodstock, Ont., signal for railways.
 45,276 Spencer D. Thurston, Camden, N.J., indicator for steam-boats.
 45,277 Frederick Sandford Seymour, Lake Geneva, Wis., wrench.
 45,281 Oleré Leblanc, Montreal, Quebec, manufacture of artificial stone.
 45,283 Paul Sattlekan, Pennsylvania, water elevator.
 45,284 Harry T. Johnston, New York, galvanic battery.
 45,285 Richard B. Painter, Williamsport, Pennsylvania, ship.
 45,286 Ogden W. Dean, Chicago, Ill., brake for railroad cars.
 45,291 Jerry Foley, Syracuse, N.Y., wrench.
 45,298 Eugene Guay, St. Henri, Montreal, Que., machine for waxing leather.

- 45,300 Charles T. Stagg, jr., Philadelphia, Pennsylvania, rail joint.
 45,301 Ira Nappin, Farmington, Ill., nut-lock.
 45,308 Timothy C. VanWyck, Brooklyn, N.Y., mechanical movement.
 45,310 Charles A. Schultz, Rondout, N.Y., brick mould.
 45,311 Edwin Stancliff, New York, N.Y., nut lock and shaft coupling.
 45,314 Louis Pfingst, Boston, Mass., car fender.
 45,315 Wm. S. Reed, Marshalltown, Iowa, water heater.
 45,316 Montague H. C. Shawn, Brisbane, Queensland, Australia, water tube boiler.
 45,317 Elishu Gray, Highland Park, Ill., telautograph (five patents).
 45,324 Clarence Otis White, Minneapolis, Minnesota, wire coiler.
 45,325 Daniel Murray, Salem, Boston, Mass., thill coupler.
 45,326 James McAllister, South Ministiquie, Mich., off setting device for saw-mill carriages
 45,332 Granville White, Moreland, Victoria, Australia, smoke consuming furnace.
 45,333 John A. Manning, Toronto, Ont., Excelsior manufacturing machines.
 45,335 Richard Megson, Cambridge, Mass., machine for making cakes and confections
 45,336 John B. Walton, Toronto, Ont., ventilator and check for furnace.
 45,338 John Beaumont Hopkins, Montreal, Que., sand sprinkler for electric cars.
 45,341 Wm. Rattray, Richmond, Quebec, process of treating ores, etc.
 45,344 Wm. H. Brand, Wagona, Ont., wagon brake.
 45,345 Wm. H. Finlayson, Sydney, New South Wales, Australia, earth excavator.
 45,346 Hippolyte J. La Force, Toronto, Ont., wheel tire.
 45,347 Edward Ferris Millard, Jackson, Michigan, sulphite fibre separator.
 45,348 Charles A. Hussey, New York, incandescent lamp.
 45,349 Charles W. Stickney, Ketchum, Idaho, process of roasting ores.
 45,359 Wm. Richard Barrett, Passaic N.J., pneumatic tire.

Wm. McMillan, Mgr. Jno. S. Tower, Supt. H. S. Burrell, Sec.-Treas.

The Mac Machine Co.

BELLEVILLE, Ont.

Manufacturers of and Dealers in

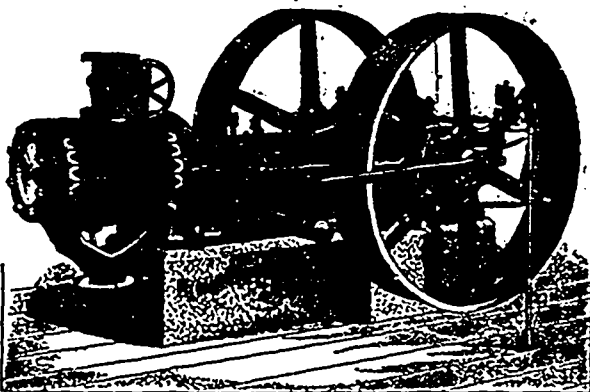
Rock Drills, Hoisting Engines, Boilers, Wire Rope
 Rubber Hose and Couplings, Batteries, Fuses

COMPLETE PLANT OF

MINING, TUNNELING AND QUARRYING MACHINERY

Burrell-Johnson Iron Co., Ltd.

YARMOUTH, Nova Scotia



Sole Manufacturers for Canada of the

FITCHBURG AUTOMATIC HIGH-SPEED ENGINES

Closest Regulation. Closest Economy. Very Best Stock and Work.

On the Fitchburg Engine now running in the power house of the Yarmouth Street Railway Co., Mr. J. S. Skinner, engineer of the company, writes: "The Fitchburg engine installed by you is giving perfect satisfaction. It is very neat in appearance, strong and durable. It runs perfectly cool and noiseless, and as for workmanship and close regulation there is no better. Our voltage stands the same, let it be light or heavy loads. As all know the sudden change of load to which a street railway generator is liable, I think the engine gives as near perfect regulation as can be had."

Adapted for Electric Lighting and all places where a reliable High-Speed Engine can be advantageously used.

The Steam Boiler & Plate Glass Ins. Co. OF CANADA.

Head Office - LONDON

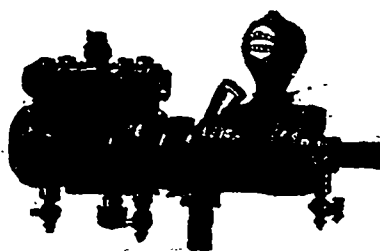
Subscribed Capital, \$200,000.00. Full Government Deposit.



DIR. CTORS:
 E. JONES PARKER, Q.C., President F. A. FITZGERALD, Esq., Vice-President
 Hon. DAVID MILLS, M.P. JOHN MORISON, Esq. T. H. PURDOM, Esq.
 JAMES LAUT, Manager J. H. KILLEY, Consulting Engineer
 JOHN FAIRGRIER, Chief Inspector

The unexpected generally happens. It pays to know that you are safe. Don't trust to luck. Have your boiler inspected and insured. Will your boiler stand the pressure at its weakest point? Inspection makes you safe; Insurance indemnifies you against loss.

The MARSH Steam Pump



... Specially adapted for Boiler Feeding. It returns its exhaust into feed water, heating it from 40 to 50 degrees. All sizes, and with capacity ranging from 200 to 1,500 gallons per hour. Send for Catalogue. We also manufacture Engines and Boilers, all sizes. Grist and Saw Mill Machinery, Water Wheels, Shafting, Hangers and Pulleys. Steam Launches, Shipman & Acme Coal Oil Engines and Boilers, both Stationary and Marine.

... Write for Particulars ...

JOHN GILLIES & CO.

MANUFACTURERS

CARLETON PLACE, Ont.