

J. T. NICOLSON, B.Sc.
MONTREAL, QUE.

Professor of

Mechanical Engineering & Thermodynamics
MCGILL COLLEGE.**CONSULTING MECHANICAL ENGINEER**

Tests, Examinations, Reports.

COMPRESSED AIR a Specialty**JOHN GALT, C.E. & M.E.**

(Member Can. Soc. C.E.)

Consulting Engineer and Expert

Specialties

Water Supply and Sewerage, etc.
Electric Power, Lighting, Railways, etc.

Offices:

Canada Life Building, - TORONTO

ALAN MACDOUGALL

(M. Can. Soc. C.E., M. Inst. C.E.)

Civil, Sanitary, and Hydraulic Engineer

Plans and Estimates prepared and Surveys undertaken for Waterworks, Sewerage, Irrigation and Land Drainage. Domestic Sanitation, Plumbing and Ventilation of Buildings a specialty. Construction Superintended.

32 Adelaide St. East, TORONTO

A. LEOFREDGraduate of Laval
and McGill**Mining Engineer**

Head Office . . . QUEBEC

Branch Offices:—17 Place d'Armes Hill, Montreal,
and at Sherbrooke, Que.**Mines and Mineral Products****WM. MURDOCH, D.L.S.****CIVIL ENGINEER**

Surveys, estimates, designs, specifications and superintendence of works for the water supply and sewerage of towns, drainage and reclamation of waste lands and the development of water power.

74 Carmarthen St. (Cor. Leinster)

ST. JOHN, N.B.

THOS. A. S. HAY

(Member Can. Soc. C.E.)

CONSULTING ENGINEER

Bank of Commerce Building

PETERBOROUGH, ONT.

Surveys, Plans, Reports and Estimates prepared for Steam and Electric Railways, Steel, Iron and Timber Bridges, Water Supply, Hydraulic Power and Irrigation, City and Suburban Drainage, Roads and Culverts, Manufacturing Establishments.

Mechanical Drawings and Designs of Special Machinery and

Patents Mining Lands examined and reported on

LOCAN & RANKIN

Consulting Engineers

MECHANICAL and MARINE

Plans and Specifications prepared.

Construction Superintended

Office: Canada Life Bldg., TORONTO

Telephone 1533.

W. R. BUTLER, M. ENG.

Assoc. M. Inst. C.E., M. Can. Soc. C.E.

CIVIL ENGINEERPlans, Estimates, etc., for Railway, Water Supply,
Sanitary Works, etc., etcLecturer in Civil Engineering, Kings College
University, Windsor, N.S.**T. C. KEEFER, C.E.**

(Mem. Can. Soc. C.E.)

CONSULTING ENGINEER,

OTTAWA, ONT.

F. H. MASON, F.C.S.First class Certificates in Chemistry and Metallurgy from the
Royal School of Mines, London, Late Chemical and
Assayer to the Newbery Vautin (Patents)
Gold Extraction Company, Ltd.**Assays and Complete Analyses of all Minerals****THE ASSAY OFFICE**

Arlington Place, - - TRURO, N.S.

Montreal School of Electricity.A limited number of pupils can be accommodated at
the above institutionA thorough course given in practical and theoretical
Electrical Engineering. Class limited. Terms
moderate. Apply personally.

C. G. SIEBERT, Electrical Engineer

47 Church Street

St. Jean Baptiste Electric Light Co.

O. MORIN, Pres. B. Z. LEBEUF, Gen. Man.

City Office: IMPERIAL BUILDING

Works: Cor. Rachel and Montana Streets

MONTREAL**INCANDESCENT ELECTRIC LIGHTS**

for Workshops, Stores and Residences.

WARING, WHITE & CO., Engineers

ST. JOHN, N.B.

Makers of the

**Simplex
Compound
Engine**

Patented Dec., 1893

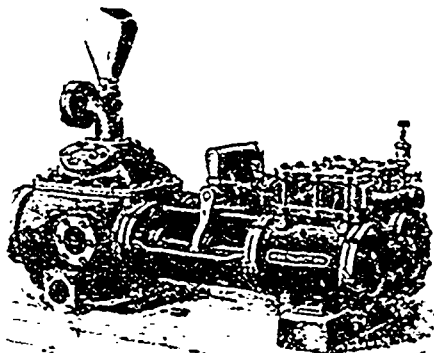
THIS new engine combines all
the advantages of the costly
compound engine with the sim-
plicity of the ordinary high pres-
sure engine. Send for further
particulars before buying else-
where.

ESTABLISHED 1835

Phoenix Foundry and Locomotive Works Pond St.,
ST. JOHN, N.B.**JAMES FLEMING**

Successor to GLO. FLEMING & SONS

Manufacturer of

Locomotives, Marine and Stationary Steam Engines, Steam Boilers,
Ship Tanks, Bridges and Machinery of every description.**R. H. BUCHANAN & CO.**

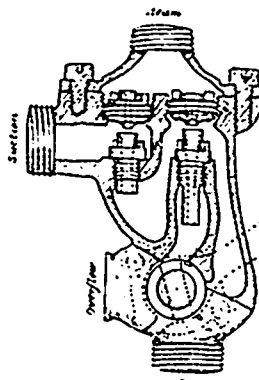
Canadian Agents for

H. R. Worthington Duplex Steam Pump.

684 Craig Street, MONTREAL

Worthington Duplex Steam Pumps
FOR ALL PURPOSESWaterworks Builders' and Con-
tractors' Pumping Machinery
for all purposes**STIRLING & BROWNLEY**

Brass Founders and Machinists ST. JOHN, N.B.

Sole Manufacturers and Patentees
of the**BROWNLEY INJECTOR**Unequaled for effectiveness and
simplicity.In the Brownley In-
jector there is not a
single valve, and no
complicated parts to
get out of repair. A
child can learn to work
it in five minutes. Equally adapted
to locomotive or stationary boilers,
and works in any pressure from 120
lbs. down to 6 lbs. steam. Can be
attached to boiler or steam pipe, and
no jarring will cause it to breakAll that is needed is a test to show its superiority over all other
injectors.**THE DANVILLE SLATE CO.**

MORITZ BOAS,

Gen. Manager

Manufacturers of
all kinds of**Slate Goods****Mill Stock**

of every description

Mantel Stock**Steps****Window Sills****School Slates****Hearths, Floor Tiles, Wash Tubs, Sinks, etc.**Estimates furnished to Builders, Contractors, Plumbers, etc.,
on application.Quarries and Factory:
DANVILLE, Que.

Office: ST. HYACINTHE, Que.

**STEEL
CASTINGS**From 1 to 40,000 lbs. weight
of Open Hearth, Chester or
Bessemer Steel.Gearings of all kinds, Crank Shafts,
Knuckles for Car Couplers,
Cross-Heads, Rockers, Piston Heads
etc., for Locomotives.

Steel Castings of every Description.

Chester Steel Casting Co.Office: 407 Library St., Philadelphia,
Works: Chester, Pa. Pa.**MACHINERY CATALOGUES.**We Print them to Perfection.
Write us for Quotations.**MONETARY TIMES PRINTING CO., LTD.**

TORONTO, ONT.