

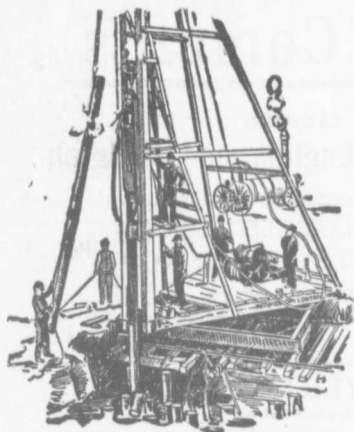
The Canadian Bridge Co., Limited

WALKERVILLE, ONT.

MANUFACTURERS OF

RAILWAY AND HIGHWAY BRIDGES

Locomotive Turn Tables,
Roofs, Steel Buildings and
Structural Iron Work of all descriptions



PILE DRIVING

on land or water by Steam Pile Drivers or Drop Hammers.

**Portable Boilers
Hoisting Engines
Pumping Machinery**

TO LET

Bridge Building, Trestle Work, Wharves
Dams, Diving Submarine Work and
General Contracting.

WM. HOOD & SON
10 Richmond Sq. - MONTREAL

Surveying and Drawing Instruments

Best English Quality

Manufactured by

A. G. Thornton

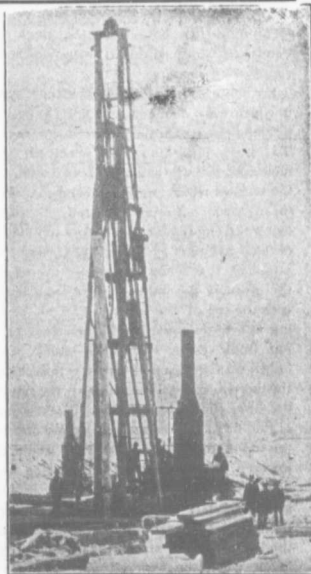
Manchester, Eng.

Surveyors' and
Engineers' Supplies

Write Us For Catalogue
and Prices

The
**C. H. MORTIMER
PUBLISHING CO.**
of Toronto, Limited
AGENTS FOR CANADA
Confederation Life Bldg., TORONTO
Alliance Building, MONTREAL

If you want to reach Municipalities advertise in the
CONTRACT RECORD.



PILE DRIVING

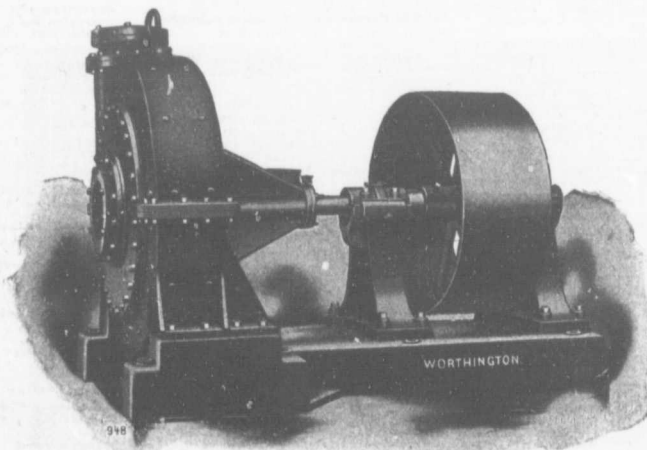
and Foundation Work.

By 5-ton Automatic Steam Pile Hammer,
Water Jet or Drop Hammers, Dock Building,
Submarine Work and Dredging.

BUILDING MOVER AND WRECKER

General Contracting.

JNO. E. RUSSELL, - Toronto
908 Queen St. E.—Phone M. 2007.



TEN INCH TURBINE DREDGING PUMP.

With removable chrome-steel lining and manganese-steel impeller. Used for handling phosphate rock and for dredging purposes. Capacity 2,500 gallons per minute against 50 feet head.

**Pumps for
Water Works**

**Water Works
Systems Installed**

**Steam Boilers
and Filters**

*Builders in Canada for
Worthington Turbine
Pumps.*

**THE JOHN McDOUGALL
CALEDONIAN IRON WORKS**

CO., LIMITED
Montreal, Que.