

feature

CKDU: Funding drive and the meaning of life

by Harold MacPhee

As I passed through the halls of the Student Union Building this past week, I kept hearing about the CKDU Funding Drive. So off I went to quiz the station manager, JoAnn Citrigno, about the role she feels CKDU is playing in the Halifax-Metro Community. In spite of the hectic activity buzzing in the CKDU staff area that day, she made some time for a chat.



Harold: How long have you been with the CKDU station?

JoAnn: I have been here approximately a year and a half but when I think back, it seems like only yesterday.

H: Where have you worked before in radio? in Canada? overseas?

JA: I worked a number of years ago at station CFRC in Guelph, Ontario, so this is not new to me. I also worked at a station for the Botswana government, in Africa, but the government directed and controlled every form of radio content we transmitted.



H: Do you miss that job? Would you like to go back?

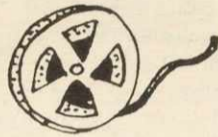
JA: No. I am more at ease here at CKDU for I feel the media is very important. Our station is a multi-national voice that tries to reach all types of listeners. The station has approximately 200 volunteers comprised of students, technicians, and

some professional people from the community who get involved with the Funding Drive and other projects during the year.



H: How many people do their own show or participate in providing some radio content for the listening audience?

JA: The latest Earcandy issue has a Block Guide which lists the over 90 individual shows including the BBC World News shows as well.



H: How many listeners in the Halifax-Metro area are tuning into your station?

JA: I believe the number of listeners we have is in the tens of thousands, I would say from the large portion of the public response our shows receive.

H: How many types of music does your station play and to what audience or groups do you play to?

JA: Our station plays Classical music, Rock music, Country music, Jazz music, Rap music, Celtic music, Opera music, and Mystic Music of the East, to name a few of them.



H: Do you find the radio format restrictive as opposed to what you want to produce?

JA: I enjoy the freedom to work

here, the station is not like other places I have worked for where the dialogue was written before you transmitted the radio content. I want to maintain and build a good, working relationship with DSU, the *Dal Gazette*, and the public. I hope, that one day in the upcoming future, we all can create a forum to

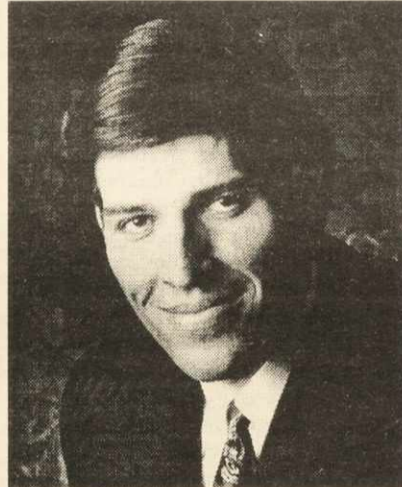
talk and discuss better ways to serve the media. Some of our current radio staff members write various articles for the *Dal Gazette*, as well as perform their own shows.

Help Programmers, Fans and Volunteers keep Metro's only Campus Community Radio Station Alive: CKDU 1993 Funding Drive. CKDU

is on the fourth floor, student union building, 6163 University Avenue, Halifax, B3H 4J2.

So please DIAL AND DONATE.

494-1993



Internationally Acclaimed
Peak Performance Strategist
Anthony Robbins

Live

One Day Seminar
Halifax

February 17, 1993

Presenting

"Strategic Influence: The
Power of Personal Marketing"

STUDENT RATE - \$149.00

Don't miss Anthony Robbins at the Metro Centre! Getting your education is an incredible achievement, now make an investment in your future. Learn how to sell yourself so you can get that one perfect job and put all your new knowledge to practice!

CALL 1 800 565 1941 IMMEDIATELY!



Canadian • Air Atlantic



**CKDU Funding Drive
has raised \$23,000.00
as of 9 pm Wednesday night
\$17,000 to go
so DIAL and DONATE!
494-1993**

CLARE MURRAY FOOSHEE

POETRY PRIZES

For a poem or group of poems (maximum 5)

First prize \$300. Second prize \$200. Third prize \$100

DEADLINE MARCH 15, 1993

Rules and regulations must be followed
and are available at the English dept.

**new
misty
moon**



1595 BARRINGTON STREET IN HALIFAX

**The NEW
PALACE**

1721 BRUNSWICK STREET IN HALIFAX

COMING SOON: TROOPER

FEB. 26&27:

BARNEY BENTALL

NOW OPEN

WED-SUN 9 PM-3:30 AM

ENTERTAINMENT HOTLINE 454-6666

PLAYING ALL WEEK:

LOCAL FAVORITE

MIND OVER MATTER

EVERY WEDNESDAY IS

LADIES NIGHT

ENTERTAINMENT

HOTLINE 429-5959

ONE TIME ONLY SPECIAL EVENT:

ASIA

AT THE NEW MISTY MOON, WED. FEB. 10.

TICKETS \$8 IN ADVANCE TAXES INCLUDED!

AT MOON AND PALACE BOX OFFICES NOW!

HALIFAX'S NIGHTLY ENTERTAINMENT HOTSPOTS