

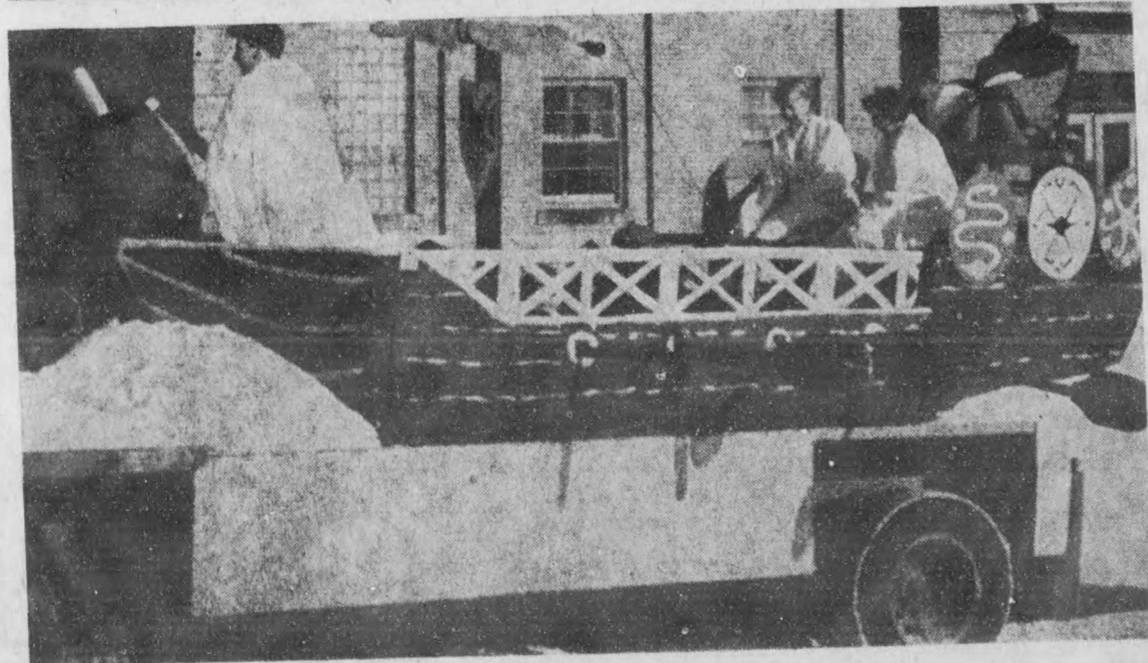
ROSEMARY . . .

☆ ☆ ☆



This is Miss Rosemary Keenan of Rothesay, New Brunswick, the 1959 Miss Canada. The lovely monarch will officially declare open Winter Carnival, 1960, tomorrow night at College Field. Miss Keenan attended Teachers' College last year and during the semester was named Miss Fredericton. From the attainment of that honor, she then moved onto the Miss Canada contest in August. The rest is history.

From Yesteryear . . .



Opening Night At Fifth Frolic To Be Gay Event

☆ ☆ ☆

Tomorrow night at the stroke of 7.30 beside the quiet and darkened Art Gallery, the scene will be one of boistrous revelry when the winter sky will turn into a coloured panorama of flame as the biggest Hand's firework display ever purchased by the Winter Carnival Committee explodes into the most sensational opening night in the five year history of Carnival.

Multiple breaks, fiery 'banshees, Tricolour Rockets, Zeno Smatterings and even a thunder and lightning storm will be the story, in a half hour aerial display that promises to be the most spectacular ever seen in the small college town of Fredericton.

But this is only part of the story. Following will be the torch-light parade which will wind its way up University Avenue to College field for the official opening of Winter Carnival 1960. Each of the torches, and reportedly there will be over 200 of them, have been individually made by Charlie Wood and his hardworking committee. Over 600 running feet of lumber, 35 gallons of kerosene, and 75 pounds of waste cotton have been used in the making of all the torches which took an estimated 40 hours to complete by an 8 man committee. Majorettes, cheerleaders and the UNB band will lead the procession of flame, and night and quiet will turn into music, shouting and laughter and the brightness of day.

And when the torches burn down and darkness comes again, six beautiful and charming queens will be framed in the circle of a spotlight as they ride in open-sportscars, to be presented to the anticipated crowd of over 2000 for the last time before they are crowned at 11.30 at the climax of the night's entertainment. And after the presentation of our Queens, another queen will stand on the stage at College field and cut the Carnival ribbon which will officially open the 1960 weekend of festivities. Miss Rosemary Keenan, the stunning and charming pride of the Maritimes, the woman who very nearly brought the title of Miss America back to her native country and province, will stand amid an ovation as she returns to see the people that wished her well when she launched her meteoric rise to fame in the biggest Beauty contest of them all. As Miss Canada formally declares Carnival 1960 open and the scissors snip the ribbon, the gaunt frame of quickmatch, lances, and wood will transform into a blazing testimony of the fact that this is the fifth annual UNB Winter Carnival.

The crowning of the Queen will be the finale of this big Opening Night Show, and is reputed to be the most spectacular ceremony yet. One of the follow-

ing six candidates will be the new Winter Carnival Queen; Miss Arts, Penny Watters; Miss Bus. Admin., Heather Worsley; Miss Engineering, Sandra Kilburn; Miss Forestry, Pat McKenzie; Miss Law, Colleen Newton; Miss Science, Nancy Ellis. Miss Carnival 1960 will be crowned by Betty Rooke, the petite and vivacious queen of last year. The final decision rests with the three judges: Miss Margaret Jones, Dr. B. L. Jewett, and Dr. Desmond Pacey.

In the words of George Bryson, Chairman of Opening Night, we have further confirmation of a full and enjoyable evening—"This promises to be the most successful opening night, entertainment-wise, in the five year period of Winter Carnival".

Bon homme!

The Winter Carnival Committee welcomes students and guests alike to the Fifth UNB Winter Carnival this weekend. One of the lovely young co-eds on this page will be crowned tomorrow evening. They are all Queens. Which will be declared "Miss Winter Carnival"? Take your pick.

Era Of Flappers Revived In Musical

After much research in the chatelaines of the effervescent 1920's, Mrs. Fred Sutherland has come up with the dinkiest costumes since Clara Bow donned her head-ache band. The costumes are modified versions of the flappers adapted for the stage production of *Rose Marie*. The gaily-colored prints and checks will be offset by beads of the Auntie Mamie variety. Completing the ensembles will be big hats, pointed-toe shoes and the irrepressible head-ache bands. Boys! the accent is definitely on the hips and knees in their costumes.

The men will also be in period costumes—many a gay boater will be seen bobbing alongside the frivolous curls. The trappers in their rustic costumes will compete with the Mounties in their blue for the admiration of the girls.

Mrs. Sutherland along with her helpers from among the students and faculty wives are really letting the needles fly to make the costuming a success.