

## Landmarks of Typewriter Progress

Such are all the recent developments of the

# Remington

VISIBLE MODELS  
10 and 11

Among these developments are:

**The Built-in Decimal Tabulator**—which makes the decimal tabulating mechanism an integral part of the typewriter.

**The Tabulator Set Key**—which eliminates all hand setting of the tabulator stops.

**The Column Selector**—which determines, by the stroke of a single key, the exact point on each line where the writing is to begin.

**The Adding and Subtracting Remington** (Wahl Mechanism)—which combines in one typewriter, and in one operation, the functions of the writing machine and the adding machine.

Every one of these new developments is an evidence of the perpetual leadership of the Remington Typewriter. Illustrated booklet descriptive of all recent Remington improvements, sent on request.

### Remington Typewriter Company

(LIMITED)

"Toronto, Canada, with Offices in Montreal, Winnipeg, Calgary and Vancouver."



## "Office Specialty" Filing Equipment gives efficient service

IT is not enough that a Filing Cabinet have a good appearance and be well constructed. Its real service to the business man is the fact that the various records of his business which are kept in that Cabinet are classified and filed so that reference can be made to any desired record at any moment.



When you buy "Office Specialty" Filing Cabinets you are buying high-grade equipment with which you get time-tried-and-proven systems.

*Any record in a moment any moment.*

Our Head Office:

**97 Wellington St. West  
Toronto**

Complete Filing Equipment  
Stores:

**Montreal Halifax Ottawa Winnipeg Calgary  
Edmonton Vancouver**

Factories: Newmarket, Ontario



MAKERS OF HIGH GRADE FILING CABINETS

### OFFICE SPECIALTY MFG. CO.

AND OFFICE FURNITURE IN STEEL AND WOOD

# MR. SHIPPER

## How About Your Freight?

Before Shipping Your Next  
Consignment to the West  
Investigate the Possibilities  
of the

## Canadian Northern Railway's Fast Freight Service

"It Will Please You"

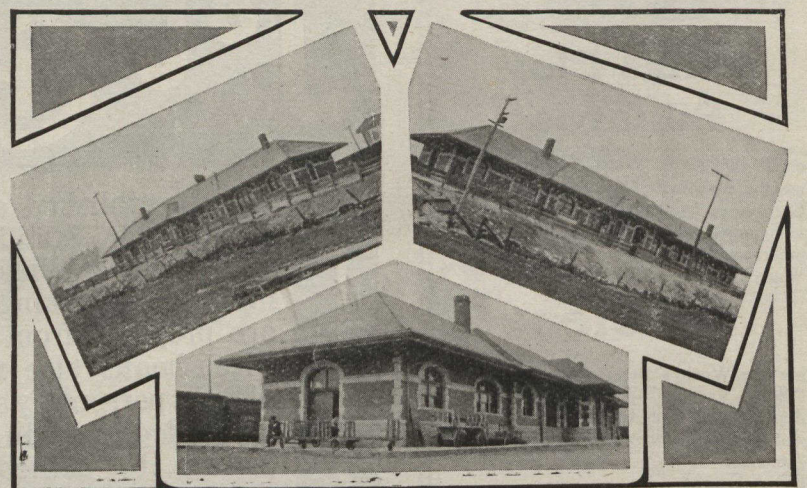
From Points in Eastern Canada to principal  
points in Manitoba, Saskatchewan and Alberta

Including:

Winnipeg	Saskatoon	Edmonton	Hartney
Brandon	Neepawa	Gladstone	Morris
Carman	Russell	Strathcona	Prince Albert
Virden	Portage la Prairie	Carberry	Canora
Camrose	Stettler	Carlyle	Maryfield
Rapid City	Emerson	Regina	Fairlight

For Freight Rates and General Information apply to

P. MOONEY, General Freight Agent, HALIFAX, N.S.	GEO. R. FAIRHEAD, District Freight Agent, HAMILTON, Ont.	F. A. SHAW, District Freight Agent, MONTREAL, Que.
F. A. YOUNG, Division Freight Agent, TORONTO, Ont.	GUY TOMBS, General Freight Agent, MONTREAL, Que.	GEO. STEPHEN, General Freight Agent, WINNIPEG, Man.



## The World's Shrewdest Buyers

Railway Purchasing Departments are the shrewdest buyers in the world. They know all markets, and every source from which any commodity can be secured. They know the prices and comparative values of almost every line of manufacture.

Every Railroad in Canada Uses

# "Bestoslate"

## ASBESTOS SHINGLES

with one exception—and repeat orders from these roads are coming in fast. The several Maintenance Departments unanimously state that the roofs are practically indestructible, and cost nothing for upkeep. If you want to know more about the most serviceable and artistic roofing material in Canada, write for Booklet C.O. to

### THE ASBESTOS MFG. CO. LIMITED

E. T. Bank Building, Montreal

Factory at Lachine, Que.