

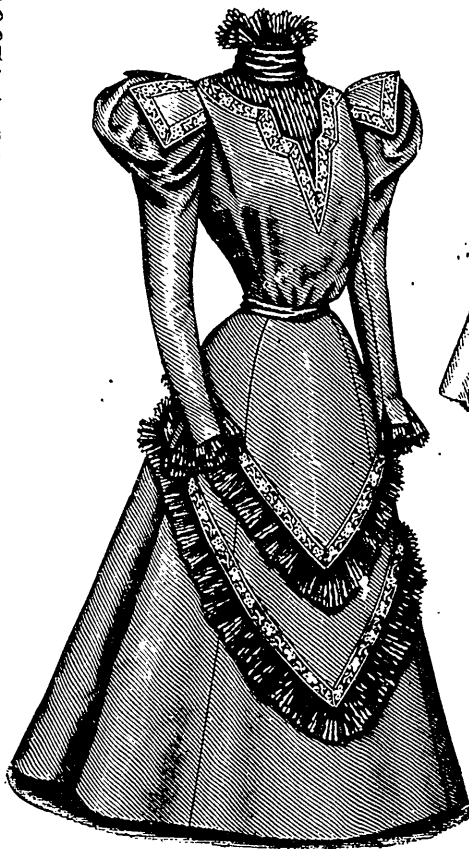
(Descriptions Continued from Page 370.)

This is an exceptionally graceful toilette. The basque-waist figured taffeta is called the Alexandra waist; it is mounted on a fitted lining and closed at the back, slight fulness being arranged at each side of the closing. The full front is in pouch

style, with three ruffs of five tucks crossing from side to side above the waist. Double frill appears rise fluffily over the two-seam bow sleeves, which form puffs at the top and are wrinkled in mousquetaire style below. Lace-edged rills at the lower edge give a dainty touch to the sleeves and lace edging rims the frill caps. The stylish stock and belt are of ribbon.

The perfect adaptability of the skirt to narrow goods is shown, noiré being here represented. The skirt is in nine gores and is admirably suited for stripes, plaids and patterned goods in any width, the gores being straight at the center and bias at the side edges so that patterns may be matched at the seams.

*Drap d'été*, Venetian cloth, zibeline and, in fact, all fine smooth woollens and also silk and wool novelties in plain and fancy effects could be made up successfully in this toilette, and silk weaves of all kinds would be effective in it. Lace bands and edging could be used to trim the waist and ruffles would be effective at the foot of the skirt.



9401

Front View.

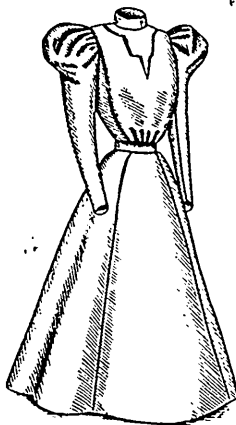
LADIES' COSTUME, CONSISTING OF A WAIST HAVING A BLOUSE-FRONT CLOSED ALONG THE LEFT SHOULDER AND UNDER-ARM SEAMS AND A FIVE-GORED SKIRT WITH FAN BACK. (KNOWN AS THE GUINEVERE GOWN.)

(For Description see Page 370.)

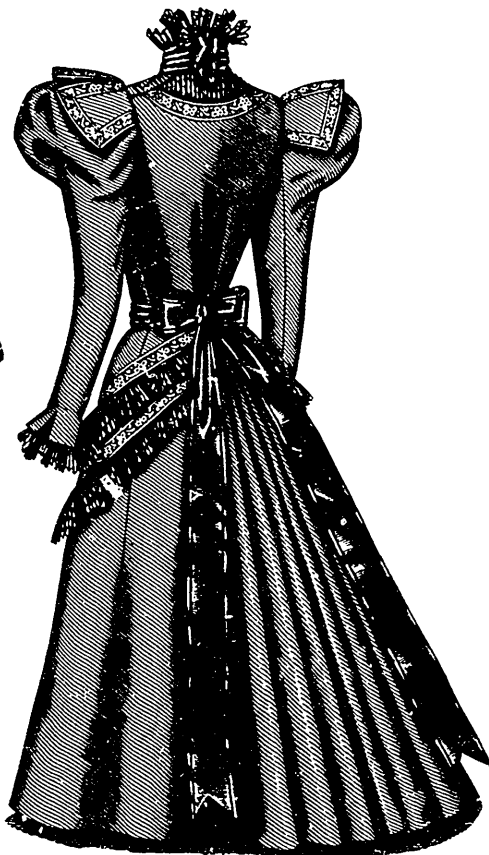
The neck may be completed with a standing collar to the upper edge of which a ripple portion with scalloped edge, or a ripple portion with plain edge is sewed and flares prettily.

The six-gored skirt is formed at the back in a box-plait between two backward-turning plaits; it is smooth at the top at the front and sides, ripples but slightly below the hips and expands with a gradual flare toward the bottom, where it measures about three yards and seven-eighths in the medium sizes. The skirt may be worn with or without a small bustle or with any style of skirt extender.

Many of the Autumn and Winter costumes will be made of broadcloth in new colors, the green, mulberry and bronze hues being particularly favored. Cheviot has not lost its hold on popular esteem and the handsome English and Scotch suitings are among the season's favored fabrics for costumes of this kind, which answer for



9401



9401

Side-Back View.

LADIES' TWO-PIECE COSTUME, CONSISTING OF A POSTILION BASQUE AND A SIX-GORED SKIRT.

(For Illustrations see Page 373.)

No. 9411.—A different development of this costume is given at figure No. 163 B in this magazine.

This is a smart tailor-made costume and is here represented made of broadcloth and trimmed with soutache braid. The basque may be made with or without a seam at the center of the front and plain across the front or curved at the dart seams and lower front corners, as shown in the illustrations. It is fitted by single bust darts and under-arm and side-back gores; the postilion back is seamless at the center, but is shaped to be extremely narrow at the waist to give a symmetrical effect. The closing is made at the left side with three pairs of buttons and button-holes. An opening to an inserted pocket in the right front may be covered with a plain or fancifully-shaped pocket-lap to match the lower edge of the basque, as shown in the engravings. The two-seam sleeves are laid in five box-plaits at the top and have coat-shaped linings.

2

the promenade, visiting and church wear. On severe modes such as this the finish is frequently given by stitching although braid is more admired by many, this finish being quite as neat as stitching and being capable of a really elaborate effect if used in more than one width and arranged fancifully.

We have pattern No. 9411 in nine sizes for ladies from